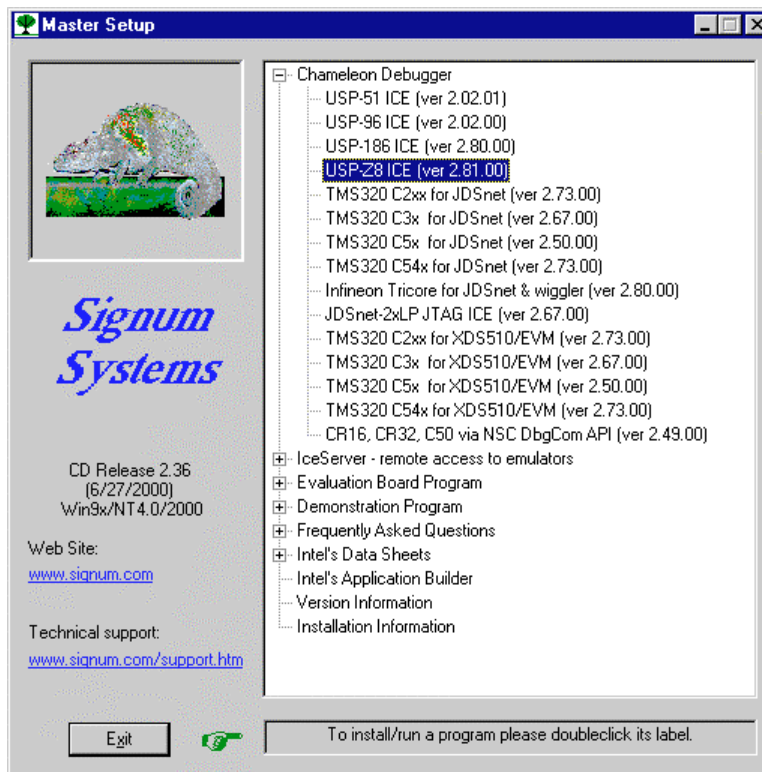


# Chameleon for USP-Z8 Installation Instructions

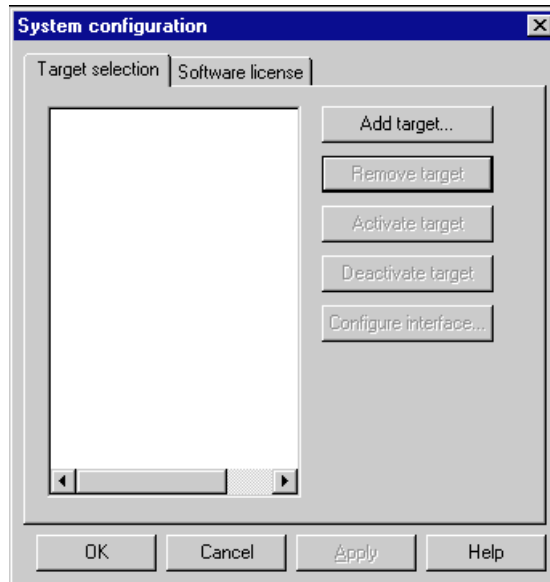
SWII-ChamUSP-Z8 11.10.00.11.14

**PURPOSE:** This document describes the Chameleon debugger installation process for use with the Signum Systems USP-Z8 emulator.

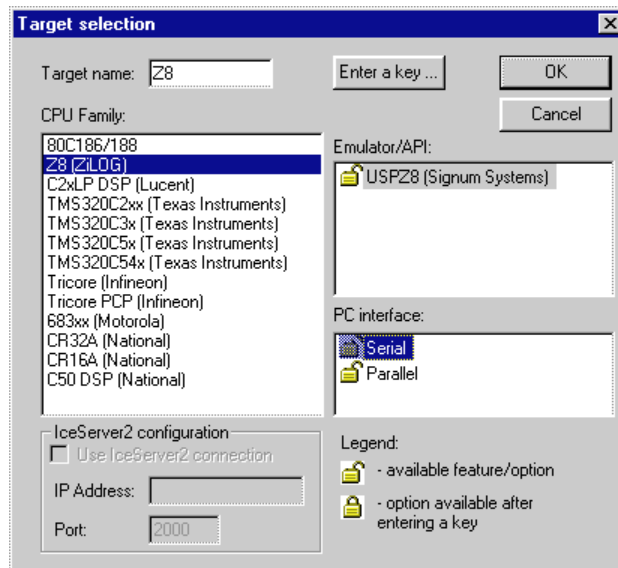
1. Insert the *Development Tools for Windows95/98/NT* CD into your CD-ROM drive. From the **Master Setup** screen, select **Chameleon Debugger** and double-click the **USP-Z8 ICE** microprocessor option to match your target.



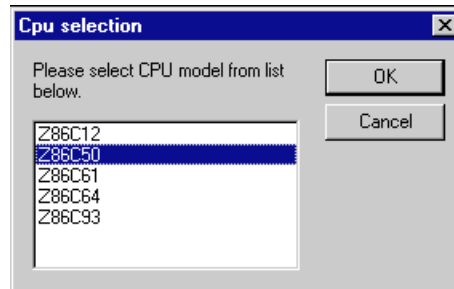
- Complete the installation process, start **Chameleon** and open the **System configuration** window from the **View** menu.



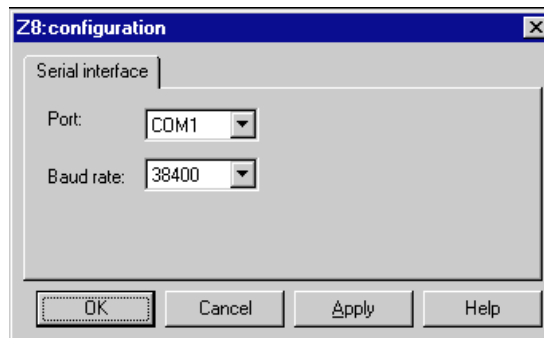
- Click the **Add Target** button to open the **Target Selection** dialog box. Choose **Z8 (ZiLOG)** as the CPU Family and click OK.



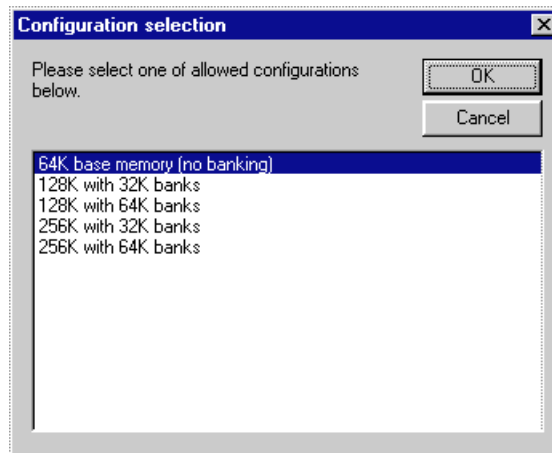
- You will be prompted to specify the Z8 CPU model you are using. Make the selection and click the OK button.



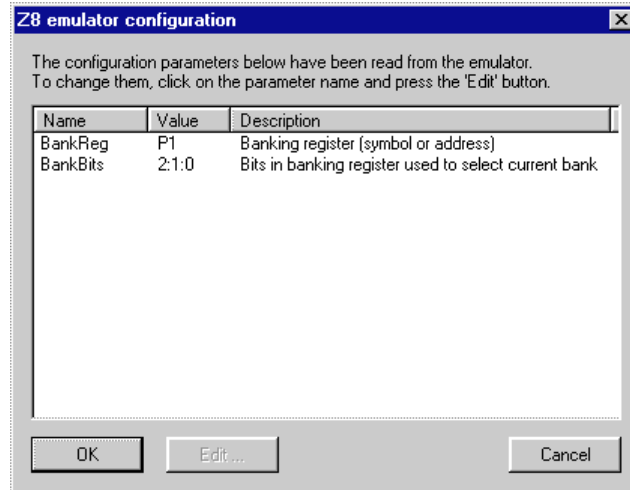
- When the **Z8 Configuration** dialog box appears, choose the appropriate communication **Port** and the **Baud rate**.



- The **Configuration Selection** dialog box appears. Select the configuration model that suits your project best.

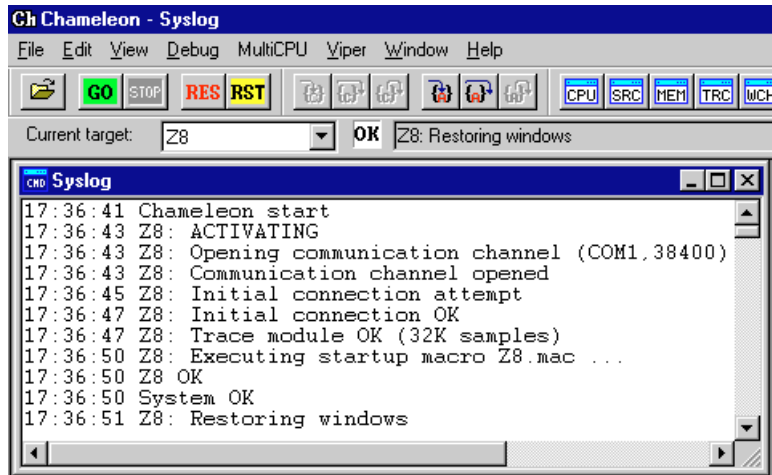


If you select one of available banking configurations, you will be asked to specify additional parameters defining the selected configuration. The dialog box may look like this:



Please refer to the document *USP-Z8: Working with Banked Program Memory* for more details regarding banked memory configurations.

7. After Chameleon has successfully established communication with the emulator, the debugger's main window should look like this.



8. Chameleon is ready for use. Now you may open the **Status**, **Source** and other windows, load an **.idb** file and start exploring the software.

