

8096

series

SIGNUM SYSTEMS CORPORATION

---

Chameleon WEMU96 for the USP-96  
(8096 Family Emulator)

# Installation Instructions

**SIGNUM**  
S Y S T E M S

## COPYRIGHT NOTICE

Copyright (c) 2007 by Signum Systems Corporation. All rights are reserved worldwide. No part of this publication may be reproduced, transmitted, transcribed, stored in a retrieval system, or translated into any language or computer language, in any form or by any means, electronic, mechanical, magnetic, optical, chemical, manual, or otherwise, without the prior written permission of Signum Systems.

## DISCLAIMER

Signum Systems makes no representations or warranties with respect to the contents hereof and specifically disclaims any implied warranties of merchantability or fitness for any particular purpose. Also, Signum Systems reserves the right to revise this publication and to make changes from time to time in the content hereof without obligation of Signum Systems to notify any person or organization of such revision or changes.

## WARRANTY

Signum Systems warrants to the original purchaser that this product is free of defects in material and workmanship and performs to applicable published Signum Systems specifications for a period of SIX MONTHS from the date of shipment. If defective, the product must be returned to Signum Systems, prepaid, within the warranty period, and it will be repaired or replaced (at our option) at no charge. Equipment or parts which have been subject to misuse, abuse, alteration, neglect, accident, unauthorized installation or repair are not covered by warranty. This warranty is in lieu of any other warranty expressed or implied. **IN NO EVENT SHALL SIGNUM SYSTEMS BE LIABLE FOR CONSEQUENTIAL DAMAGES OF ANY KIND.** It is up to the purchaser to determine the reliability and suitability of this product for his particular application.

**SIGNUM**  
S Y S T E M S  
1211 FLYNN RD., UNIT #104  
CAMARILLO, CA 93012, U.S.A  
PHONE 805 • 383 • 3682  
WWW.SIGNUM.COM

**Purpose**     *This document describes the Chameleon WEMU96 debugger installation process for use with the USP-96 emulator for the 8096 family of microcontrollers.*

## Installation

1. Insert the *Development Tools for Windows95/NT* CD into your CD-ROM drive. In the Master Setup window, select Chameleon Debugger and double-click USP-96 ICE, as shown in Figure 1.

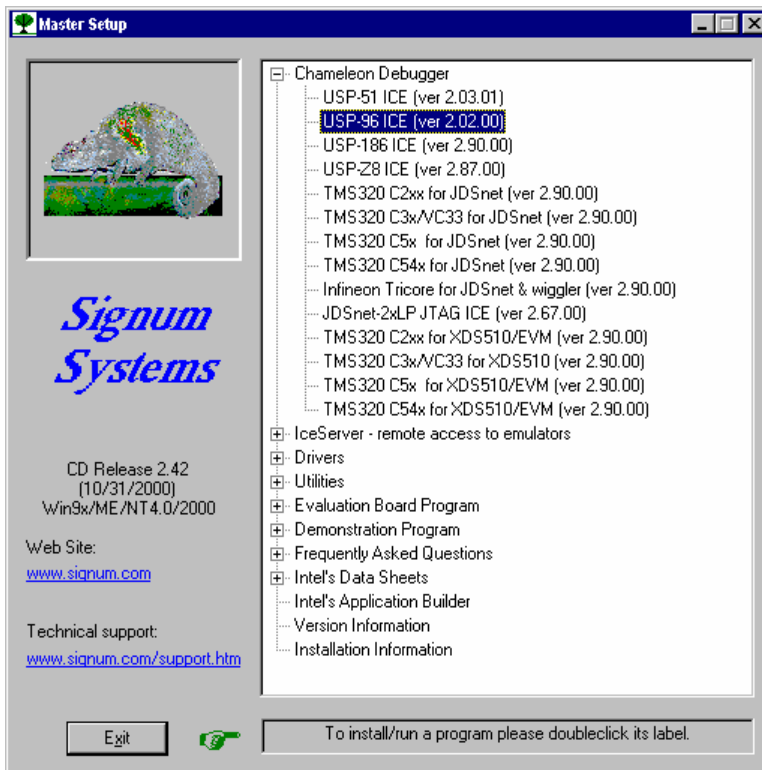


FIGURE 1 Chameleon Master Setup dialog box.

2. If you are running NT 4.0 and intend to use the parallel port, please select Yes in the following dialog box to provide Chameleon with the necessary device driver (Figure 2).

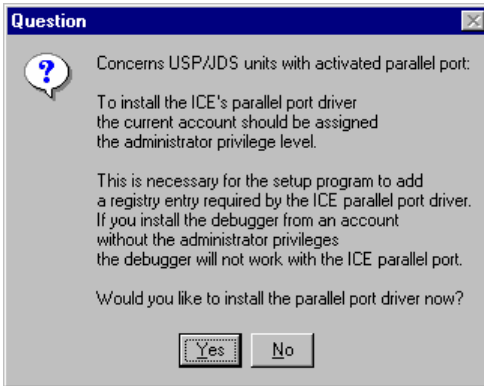


FIGURE 2 Installing the parallel driver.

3. Complete the Chameleon WEMU96 debugger installation process.
4. Connect the USP-96 emulator to your computer through a serial port and connect it to the power supply. Plug the power supply cord into an outlet and connect the emulator to the POD using the two white cables that extend from the front. Verify the correctness of the connections and turn the emulator on. Do not connect the POD to the user target yet. Please complete the installation procedures described below first.
5. Start WEMU-96. The program is in the Windows' Start menu under Programs | Signum Systems WEMU-96. The Select Target Device window appears (Figure 3).



FIGURE 3 WEMU-96 Select Target Device dialog box.

6. If you are going to use Signum's emulator, select In-Circuit Emulator; if an evaluation board is to be used, choose RISM evaluation board. Click Select.
7. Select the proper port — or IceServer<sup>1</sup> if you connected the emulator to the network — and set the remaining parameters. When using a communication port or IceServer, select the highest baud rate for best performance (Figure 4). Click Select.

---

<sup>1</sup> IceServer is Signum's optional driver enabling the emulator to be operated remotely over a network.

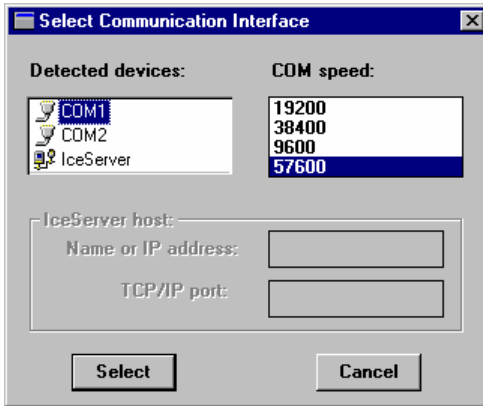
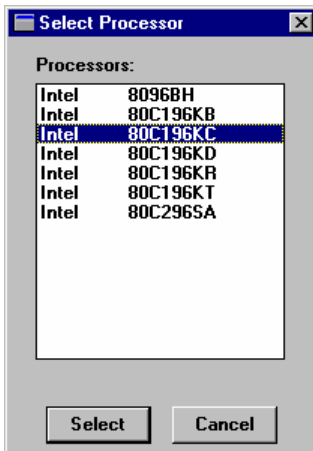


FIGURE 4 WEMU-96 Select Communication Interface dialog box.

8. Find your processor in the Select Processor dialog box and press Select (Figure 5).



**Note:** For a complete list of the processors supported by individual POD's , refer to Appendix B in the hardware installation manual.

FIGURE 5 Selecting the Processor.

9. Adjust the settings in the next dialog box that appears (Figure 6) and press Select. If in doubt, leave them unchanged by pressing the Cancel button.

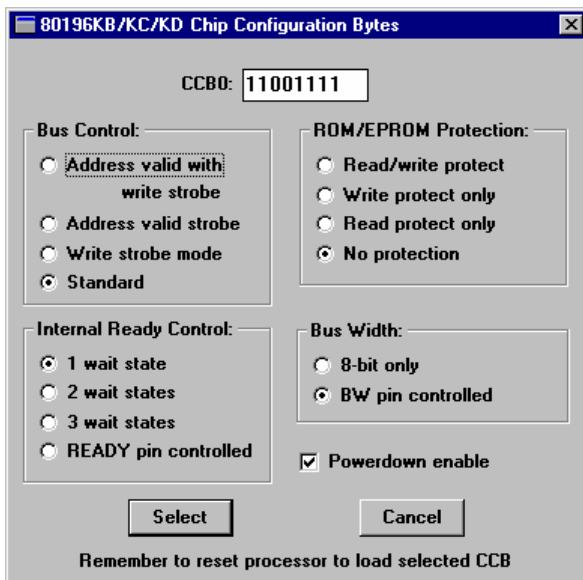


FIGURE 6 Configuring the microprocessor.

10. The Select Clock and Power Settings dialog box appears (Figure 7). A deviation from its settings shown in the figure would indicate that the POD has not yet been connected to the user target board. If this is the case, manually modify the settings to match those in the illustration.

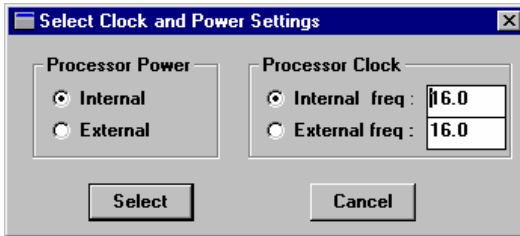


FIGURE 7 Controlling the Clock and Power Settings.

The screen should now look as shown in Figure 8.

**CHAMELEON WEMU96 FOR THE USP-96**  
INSTALLATION INSTRUCTIONS

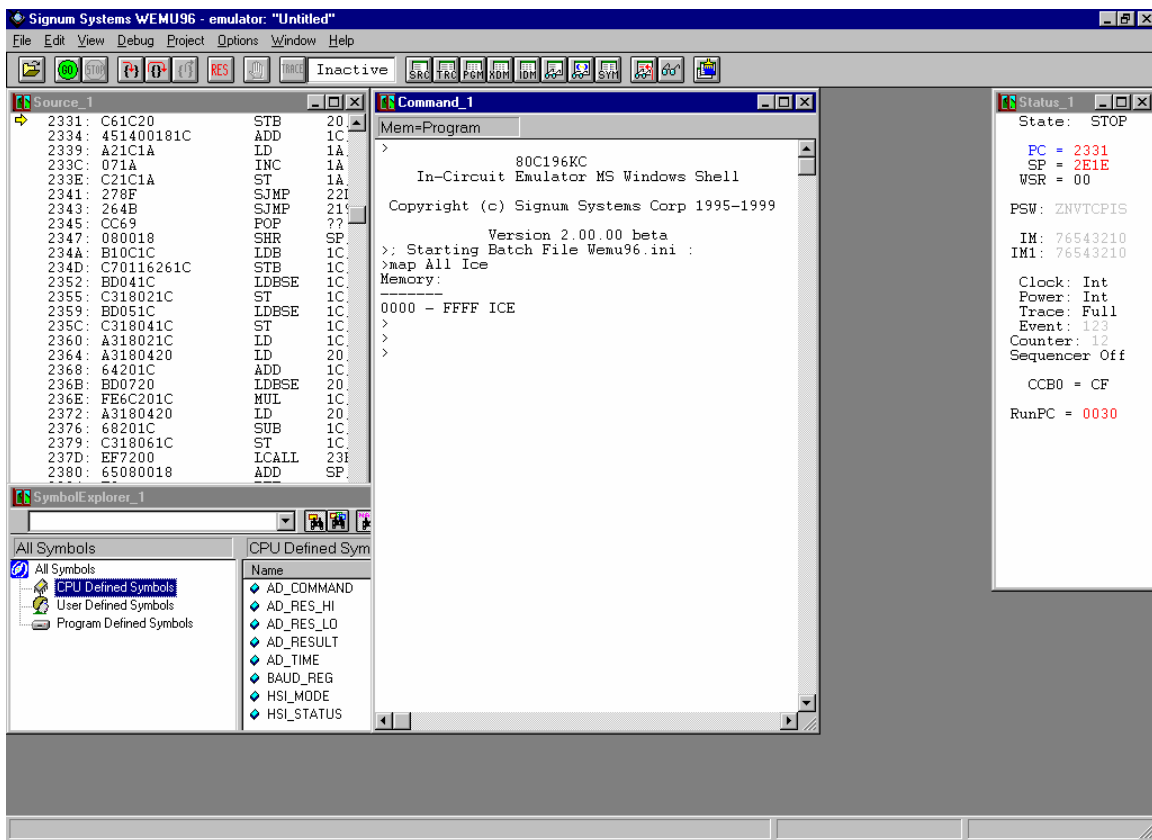


FIGURE 8 Chameleon WEMU-96 after successful installation.

11. Turn the entire system off and connect the POD to the target board.

# Technical Support

---

C O N T A C T   I N F O	
	1211 Flynn Road, Unit 104 Camarillo, California 93012
	(805) 583-3682
	(805) 583-3685
	<a href="http://www.signum.com">www.signum.com</a>
	<a href="http://signum.com/support.htm">signum.com/support.htm</a>
	<a href="http://signum.com/sales.htm">signum.com/sales.htm</a>

---

**Contact Signum Systems** Technical Support by dialing (805) 523-9774, Monday through Friday between 9 A.M. and 5 P.M. Pacific Time. In order to enable our technical support engineers to process your request efficiently, we strongly recommend submitting the Technical Support Request form available at [signum.com/support.htm](http://signum.com/support.htm).

**A Friendly Reminder** We will be able to serve you better if, when contacting our Tech Support, you are at your computer, have your documentation at hand and are prepared to

provide:

1. The version of your Signum Systems software, hardware or firmware that you are using and the serial number of your emulator.
2. The exact wording of any messages and prompts that appear on your screen.
3. The environment, in which your software is running, including the type of hardware and operating system.
4. A description of what happened and what you were doing when the problem occurred.

For more information, please visit our home page on the World Wide Web.

