

**80186**

**series**

SIGNUM SYSTEMS CORPORATION

---

Chameleon/USP-186 for the USP186

# Installation Instructions

**SIGNUM**  
S Y S T E M S

## COPYRIGHT NOTICE

Copyright (c) 2007 by Signum Systems Corporation. All rights are reserved worldwide. No part of this publication may be reproduced, transmitted, transcribed, stored in a retrieval system, or translated into any language or computer language, in any form or by any means, electronic, mechanical, magnetic, optical, chemical, manual, or otherwise, without the prior written permission of Signum Systems.

## DISCLAIMER

Signum Systems makes no representations or warranties with respect to the contents hereof and specifically disclaims any implied warranties of merchantability or fitness for any particular purpose. Also, Signum Systems reserves the right to revise this publication and to make changes from time to time in the content hereof without obligation of Signum Systems to notify any person or organization of such revision or changes.

## WARRANTY

Signum Systems warrants to the original purchaser that this product is free of defects in material and workmanship and performs to applicable published Signum Systems specifications for a period of SIX MONTHS from the date of shipment. If defective, the product must be returned to Signum Systems, prepaid, within the warranty period, and it will be repaired or replaced (at our option) at no charge. Equipment or parts which have been subject to misuse, abuse, alteration, neglect, accident, unauthorized installation or repair are not covered by warranty. This warranty is in lieu of any other warranty expressed or implied. **IN NO EVENT SHALL SIGNUM SYSTEMS BE LIABLE FOR CONSEQUENTIAL DAMAGES OF ANY KIND.** It is up to the purchaser to determine the reliability and suitability of this product for his particular application.

**SIGNUM**  
S Y S T E M S  
1211 FLYNN RD., UNIT #104  
CAMARILLO, CA 93012, U.S.A  
PHONE 805 • 383 • 3682  
WWW.SIGNUM.COM

**Purpose** *This document describes the installation process for Chameleon Debugger used with the USP-186 emulator for the 80C186/188 family of processors.*

1. Insert the *Development Tools for Windows95/NT* CD into your CD-ROM drive. In the Master Setup window, select Chameleon Debugger and double-click USP-186 ICE.

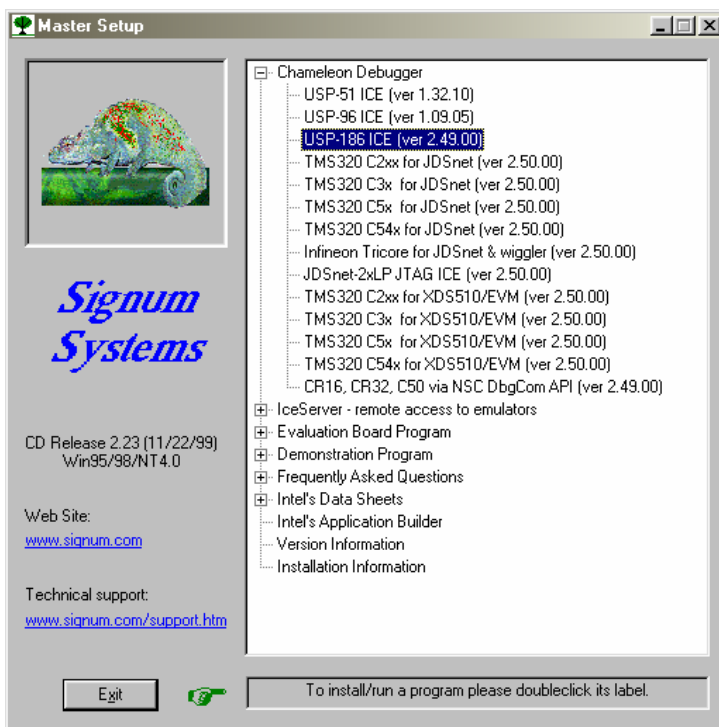


FIGURE 1 Chameleon Master Setup window.

2. If you are running NT 4.0, please select Yes in the following dialog box (Figure 2) in order to provide Chameleon with the necessary parallel port driver.

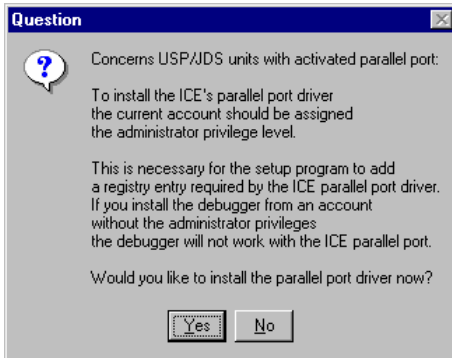


FIGURE 2 Installing the parallel port driver.

3. Complete the installation process, start Chameleon and click the Add target button in the debugger's System Configuration window (Figure 3).

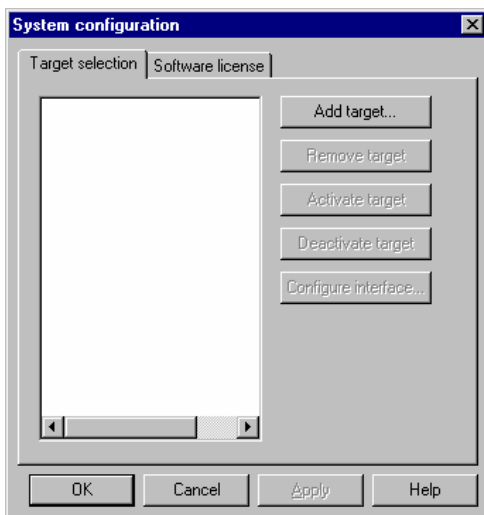


FIGURE 3 System Configuration window.

4. Click the Add target button. The Target Selection window (Figure 4) opens.
5. From the Target selection dialog box, in CPU Family, select 80C186/188 and choose the appropriate Emulator/API. See Figure 4.

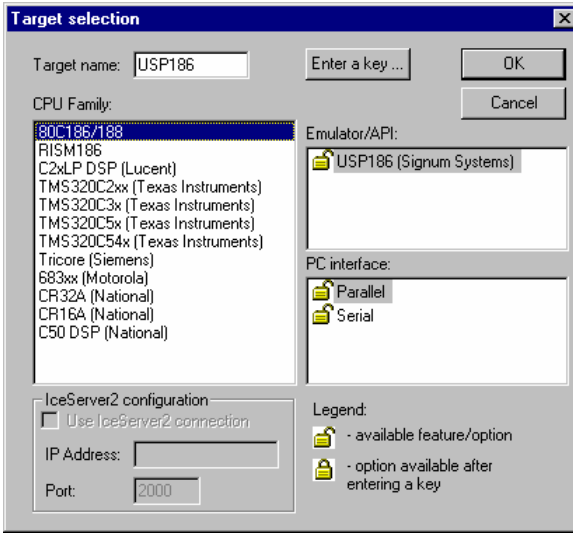


FIGURE 4 Target Selection window.

6. In PC Interface, select the communication port to be used. Accordingly, one of the following dialog boxes appears (Figure 5).

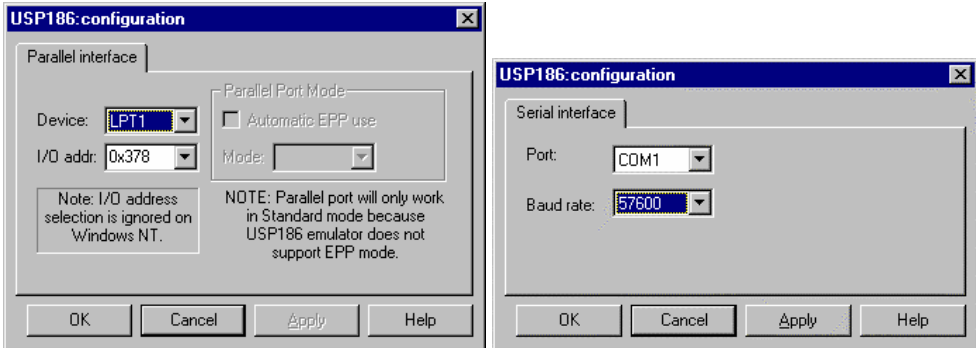


FIGURE 5 Configuring the communication port.

7. Select the appropriate settings and click OK to close the Target Selection window.

**CHAMELEON/USP-186 FOR THE USP-186**  
INSTALLATION INSTRUCTIONS

8. Make sure that the USP-186 emulator is connected to the selected parallel port and turned on. Click OK. Chameleon starts communicating with the emulator. The initial screen should look like Figure 6.

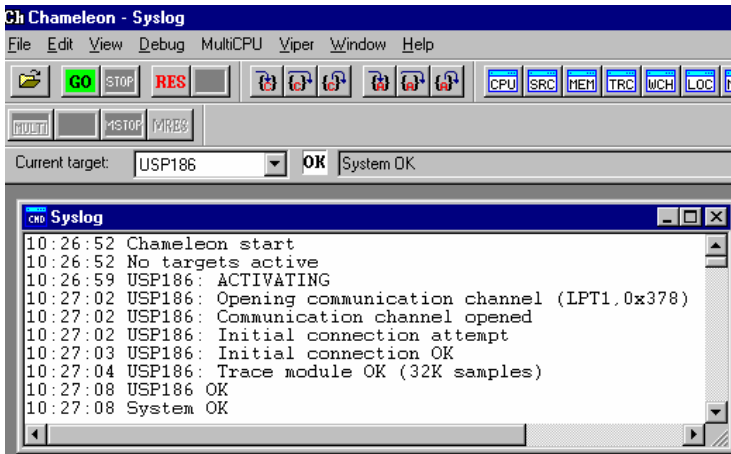


FIGURE 6 Chameleon's main window upon successful start-up.

