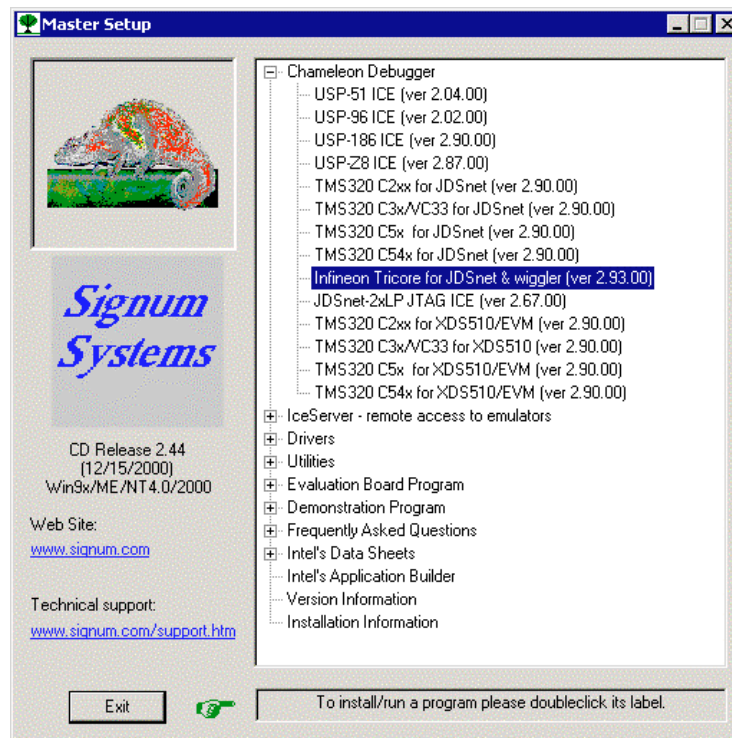


Chameleon/JDSnet for Infineon's TriCore Installation Instructions

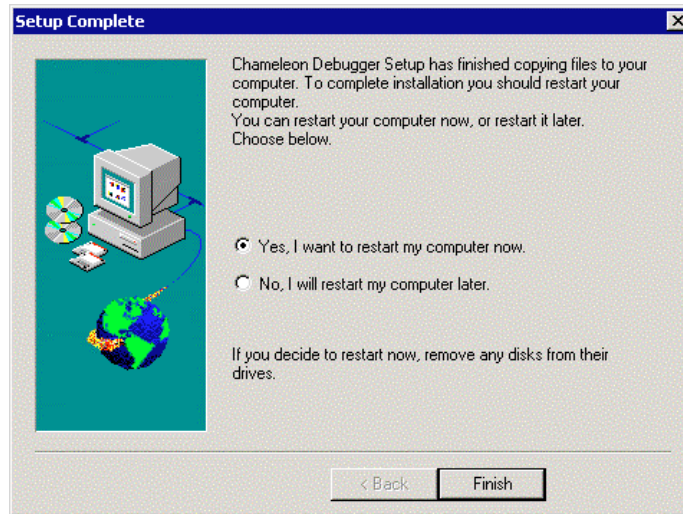
SWII-ChamJDSnet-TriCore 1.23.01.09.04

PURPOSE: This document explains how to install Chameleon debugger used with the JDSnet emulator for Infineon's TriCore processor.

1. Insert the *Development Tools for Windows9x/NT and 2000* CD into your CD-ROM drive. From the Master Setup window, select **Chameleon Debugger** and double-click **Infineon Tricore for JDSnet & wiggler**.

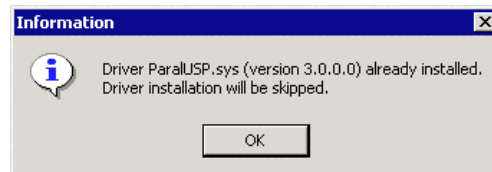


- If you are running NT 4.0 or Windows 2000, the necessary parallel port driver will be installed, and your system will need to be restarted to complete the driver installation:

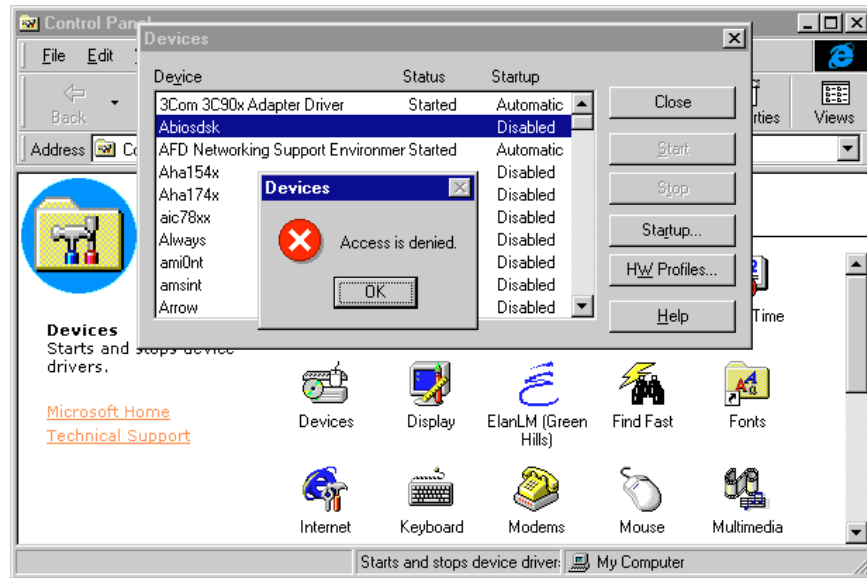


IMPORTANT NOTE: In order to successfully install the driver, you need to have an administrator privileges on your NT/2000 system. Ordinary users are not allowed to install new device drivers. Win95/98 systems do not require any special drivers and no system restart will be necessary.

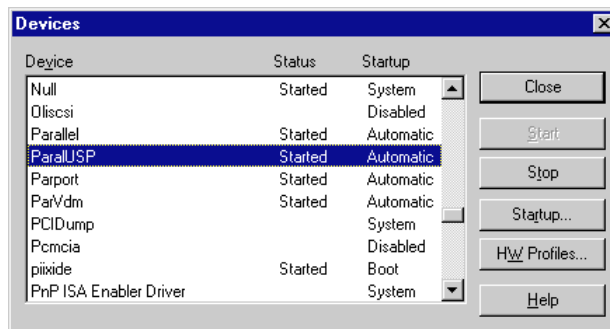
If the driver is already installed (for example with older versions of the debugger), the following message will appear and no system reboot will be necessary:



On NT 4.0, the simplest way to check if you have administrator privileges is to open Control Panel, then Devices and click Startup ... button for any device. If you do not have administrator privileges, then the following message will be displayed:



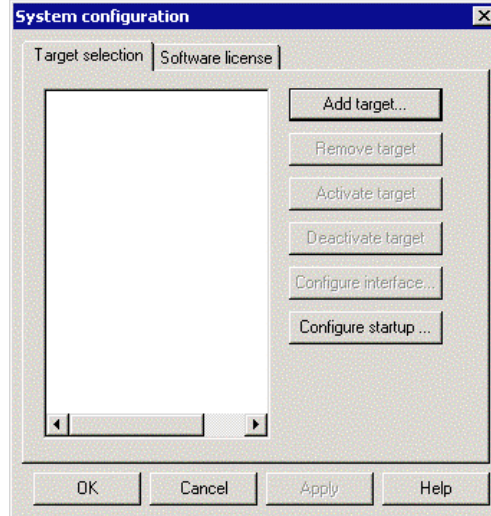
You can verify the installation of ParalUSP driver in Control Panel, Devices and scrolling down to ParalUSP driver. Status of driver should be Started and Automatic:



NT2000 system will warn you before trying to install the software with a message similar to the following:



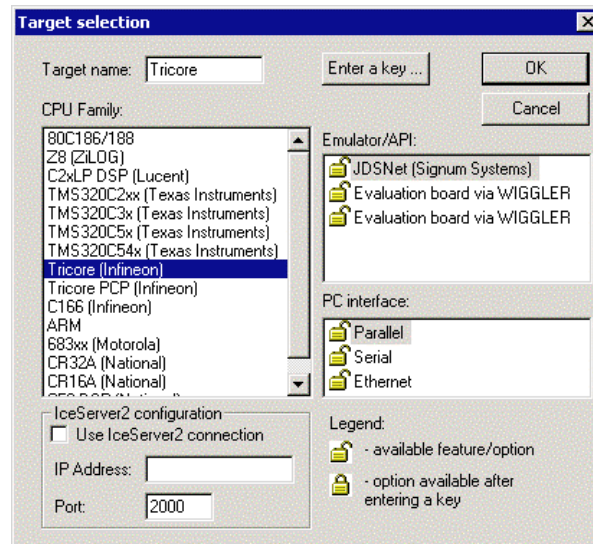
- Complete the installation process, start Chameleon and click the **Add target ...** button in the System Configuration window.



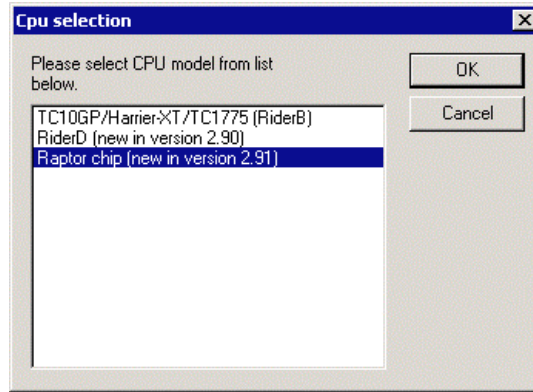
- Click the **Add target ...** button. The **Target Selection window** (shown later) appears. Click the **Enter a key ...** button and enter the license key from the Product User License Certificate.



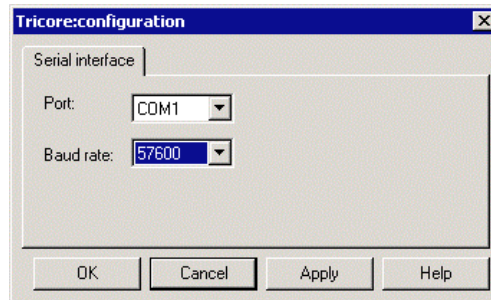
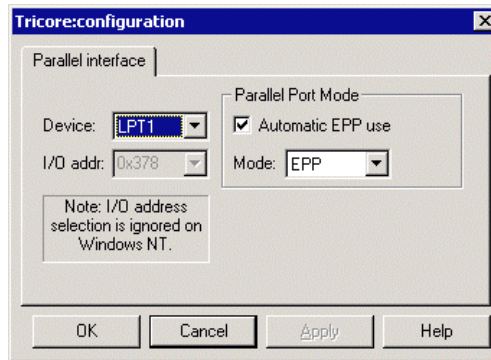
- In the **Target selection** dialog box, select **Tricore (Infineon)** as the CPU Family, and **JDSnet (Signum Systems)** as the Emulator/API.



- If prompted, specify the CPU model you are using.

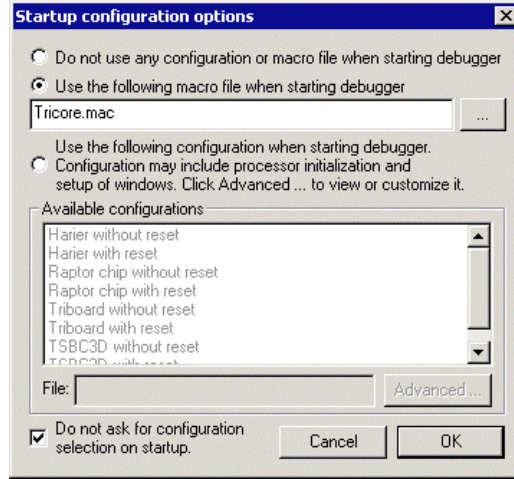


7. In **PC Interface** from the **Target selection** dialog box, select the option that matches the emulator connection (**Parallel** or **Serial**). Click **OK** to complete target installation. You will be asked to specify the communication port parameters in one of the following dialog boxes:



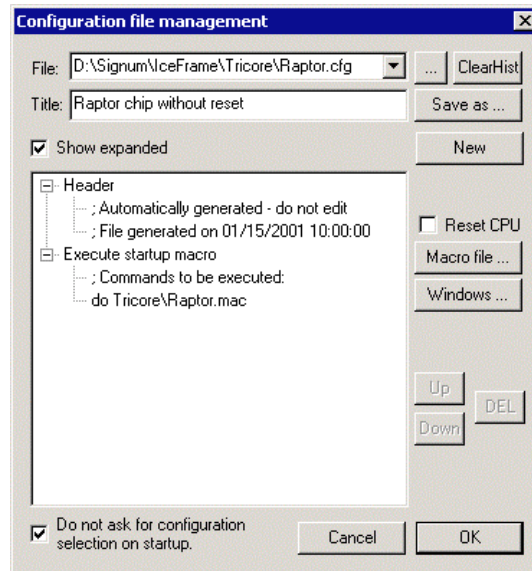
NOTE: The JDSnet emulator may also work using an Ethernet connection. This type of connection requires an additional license key. The activation process is described in a separate document.

8. Chameleon 2.93 or newer allows more flexible startup configuration setup. The following dialog box allows you to select startup configuration:



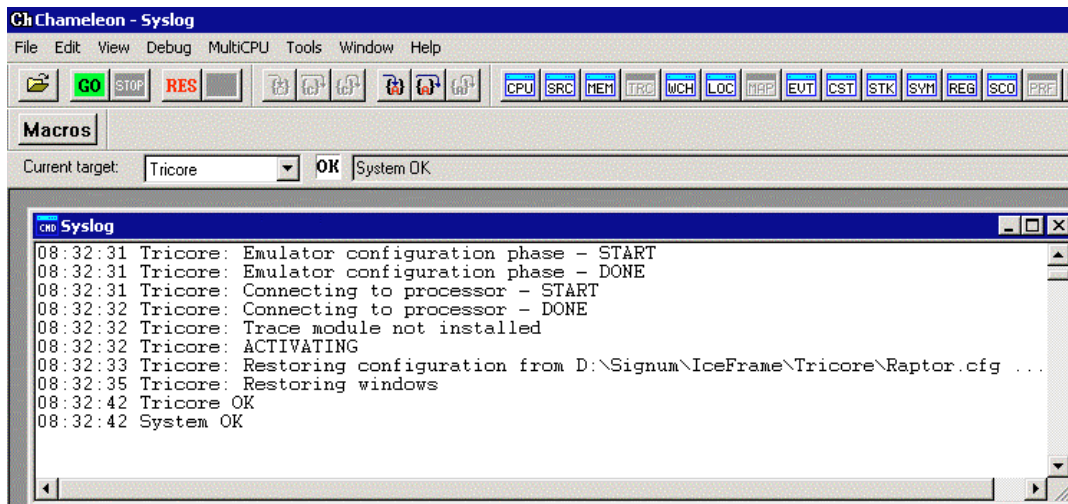
Note, that you may now change name of startup macro file (or click ... to browse for it).

Configuration files allow you to have more control on debugger initialization than startup macro files. A list of available configurations is taken from Tricore*.cfg files. Click **Advanced ...** button to view or customize it:

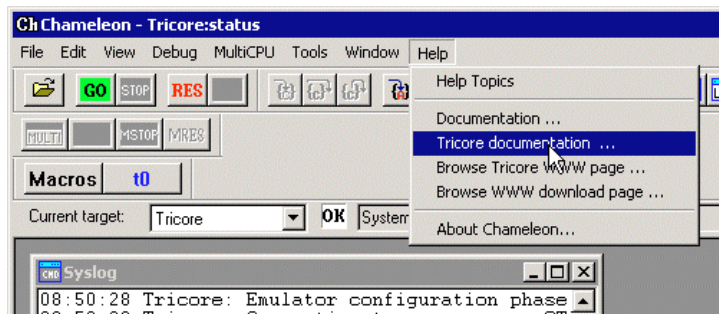


It is suggested that you do not change files distributed with Chameleon, but to create your own by using **Save as ...** button. You may also specify windows to be opened on start of the debugger.

9. Make sure that your **JDSnet** emulator is powered and connected to the selected communication port. The JTAG cable should be attached to the JTAG connector on the target board and jumpers set as shown in Appendix. Click **OK**. After Chameleon connects to the emulator, the initial screen should look like this.



NOTE: Chameleon's documentation (including this file) may be obtained from Help menu:



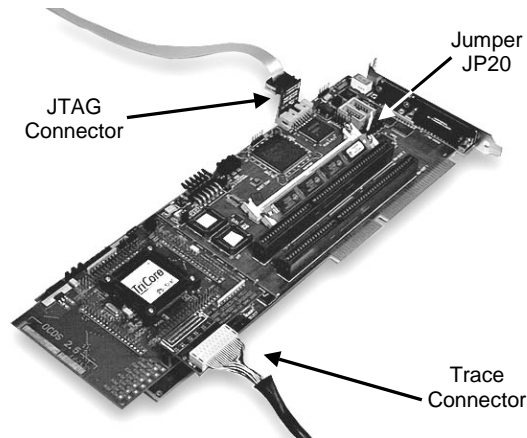
We do suggest to become familiar with it before continuing with your own project ...

In case of difficulties or problems with installation or debugger startup, please send all *.log and *.ini files from Chameleon's directory to support@signum.com.



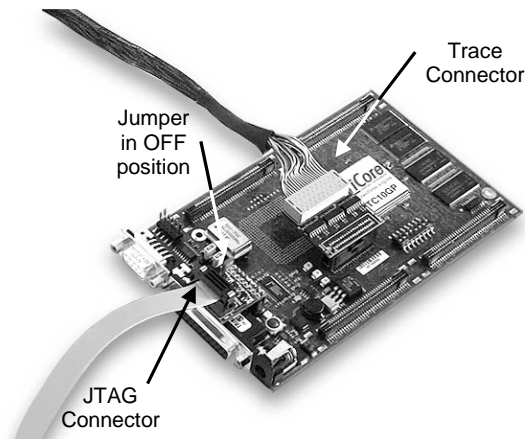
Appendix

This appendix describes how to connect OCDS L1 (JTAG) and OCDS L2 probes. Since the JTAG and OCDS headers on the TriCore PC boards do not have key pins, study the illustrations carefully to avoid incorrect connections.



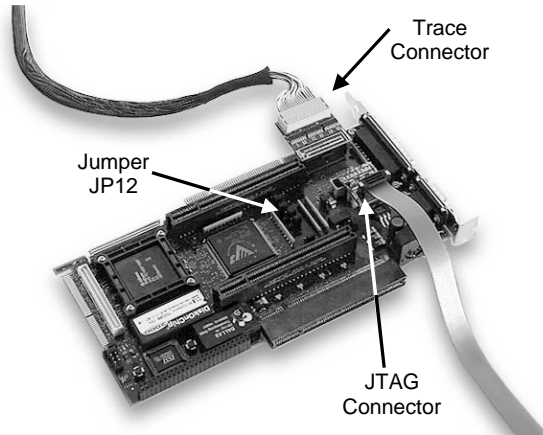
TriCore Evaluation Board with RBMMU ver. B.

Make sure that jumper JP20 on the board connects pins 2 and 3.

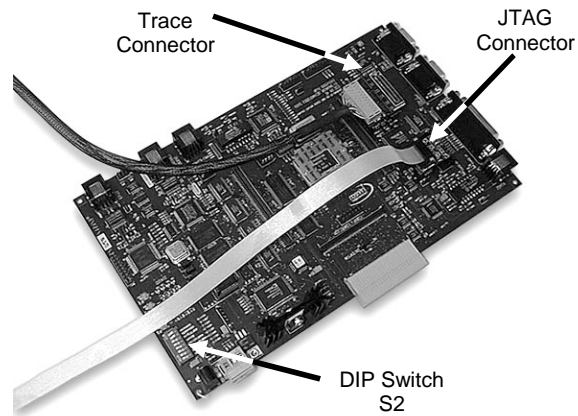


Triboard with TC10GP.

The jumper next to the 18-pin JTAG header should be in the OFF position.

**Meteor TSBC.**

Set jumper JP12 on pins 2-3 (feed JTAG to Mezzanine).

**EASY4260 with Harrier-XT.**

For JTAG-based operation, set DIP-switch S2-2 to the OFF position. To enable the OCDS L2 trace, set DIP-switch S2-3 to the ON position.

□