

# JDSnet Ethernet Option

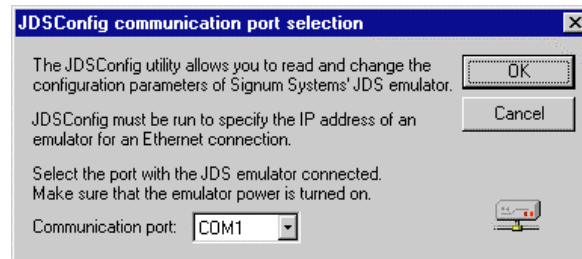
## Installation Instructions

SWII-ChamJDSnet-Ether 8.8.00.10.02

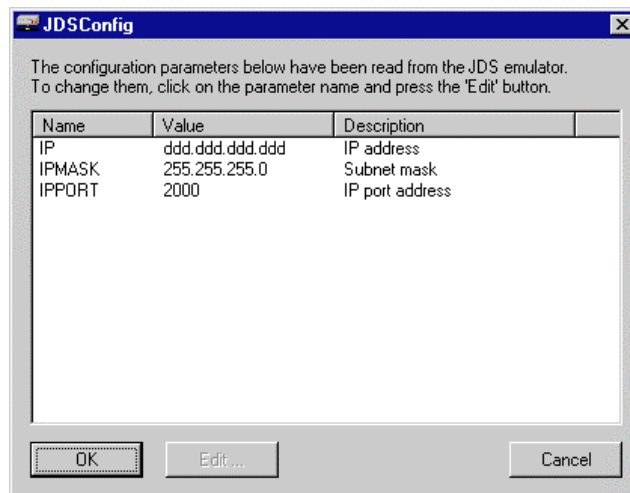
**PURPOSE:** This document explains how to use the JDSConfig utility that comes with the JDSnet emulator to set up the unit for operating over a local area network (LAN).

To make the JDSnet emulator network-ready, it is necessary to store in it the Internet protocol address (IP address) along with some other related parameters. This requires connecting the JDSnet unit with the computer running JDSConfig via one of the available communication ports. After uploading the parameters, the connection is no longer needed and the unit can be attached directly to the network.

1. Run the JDSConfig program. — The utility is found in the program group created when you installed the Chameleon debugger. If you used the default settings, invoke JDSConfig by clicking the Windows **Start** button, pointing to **Programs**, selecting **Signum Systems Chameleon**, and then choosing **JDSConfig**. Otherwise, run JDSConfig from the folder or program group in which you installed the software. The **JDSConfig communication port selection** window appears:



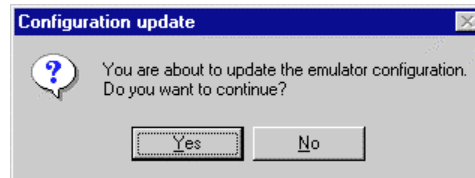
2. Select the communication port. — From the list of available ports, choose the one to which the emulator is attached and press the **OK** button. The next window appears:



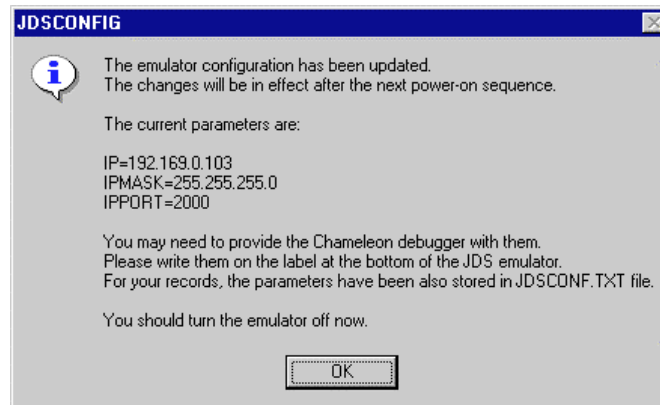
3. Enter the IP address of your emulator unit. —Do that by selecting the parameter name in the dialog box, pressing the **Edit** button and typing the address. Alternatively, double click the name and make the necessary changes. Note that the address may be required for setting up the Chameleon debugger

on a network, as described in section Software Installation. If you do not know the IP address, contact your network administrator.

4. You may modify the remaining network parameters. — These include the subnet mask and IP port address. Consult your network administrator before making the change.
5. Click the **OK** button twice to accept the current settings and close the dialog box. JDSConfig displays a confirmation dialog if any of the configuration parameters has been changed.
6. Respond to the parameter change confirmation dialog:



7. Make a record of the network configuration parameters. — The parameters are vital to correct operation of the emulator on the network, and may be needed when running Chameleon for the first time in a network environment. We strongly recommend putting the parameter values on the label provided for that purpose underneath the emulator box. Should you loose the settings, they can be found in the jdsconf.txt file located in the directory where you installed the software. (The default location is the folder c:\Signum\Chameleon.) JDSConfig displays the final message box similar to that shown below:



8. Restart the emulator. — The new settings will take effect after the unit is shut off and then powered up again.
9. Verify the network connection between the emulator and the computer. — From a DOS shell window, execute the **ping <IP address>** command, substituting *IP address* with the actual address you entered in step 3.

You may now disconnect your JDSnet emulator from the communication port of the computer and connect it to the network using an Ethernet cable.

