



© 2007 Signum Systems
1211 Flynn Road Unit 104 • Camarillo, CA 93012
Phone 805. 383.3682 • Fax 805. 383.3685
sup1@signum.com
www.signum.com

Using IceServer2 with Chameleon Debugger Installation Instructions

SWII-ChamIceServ2 4.26.07.13.23 570

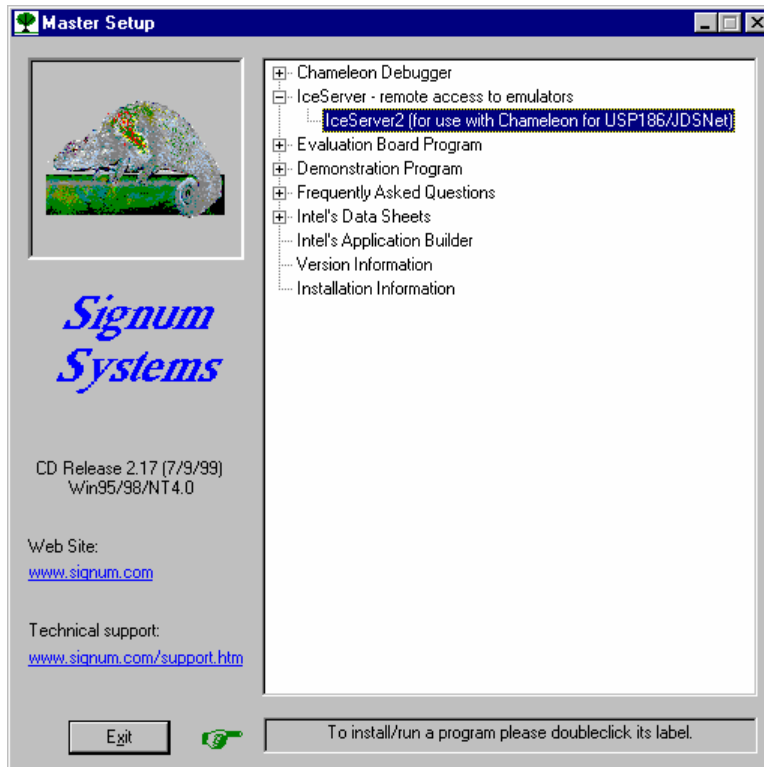
PURPOSE: This document explains how to install IceServer2, a program that allows an emulator to be shared over a network, and how to configure Chameleon Debugger accordingly.

1. Introduction

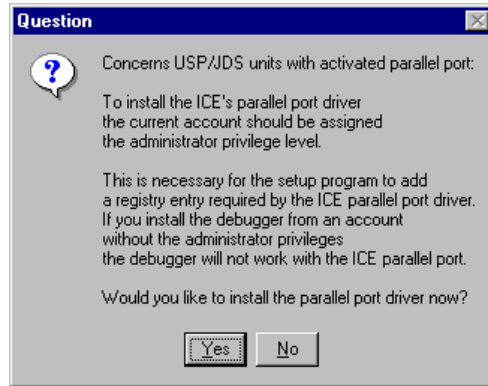
IceServer2 allows Chameleon Debugger that is running on one computer to access an In-Circuit Emulator (ICE) connected to another computer over the TCP/IP network. The utility makes your ICE available to more users, allowing them to share their expertise across the network and use your debugging resources more efficiently. One copy of IceServer2 may provide access to multiple emulators. You should install the IceServer2 software on the machine that is connected to the emulators, and configure Chameleon Debugger on the client's workstation(s).

2. IceServer2 Installation

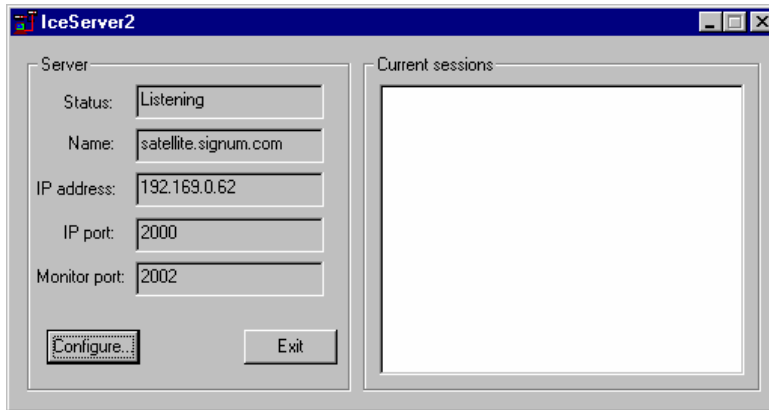
1. In the Master Setup window, select **IceServer - remote access to emulators** and double-click **IceServer2 [...]**.



2. If you are running Windows NT 4.0 and want to attach the emulators to parallel ports, click **Yes** in the dialog box that appears to provide Chameleon with the appropriate driver.



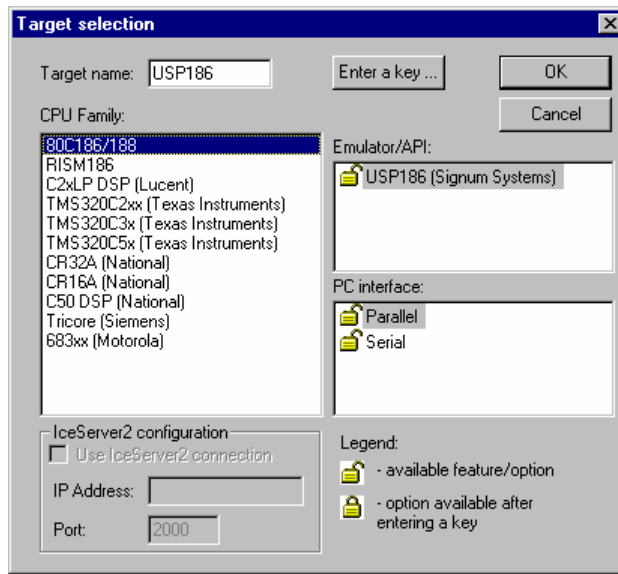
3. Complete IceServer2 installation and start the software. You should see the following dialog box.



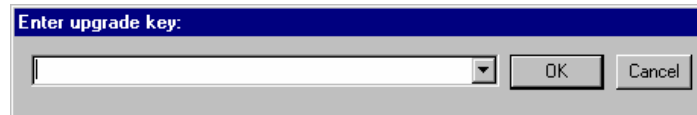
The **IP address** and **IP port** fields define the network address of IceServer2. These two parameters should be used in Chameleon debugger (see below). The button **Configure** allows you to change the **IP port** parameter. However, unless there is a conflict with other network-based software, it is not necessary to change the port. The **Monitor port** address may be used for monitoring IceServer2 operation using a telnet connection. This control is provided for maintenance purposes, and therefore it should not be used in normal operation.

3. Using IceServer2 in Chameleon Debugger

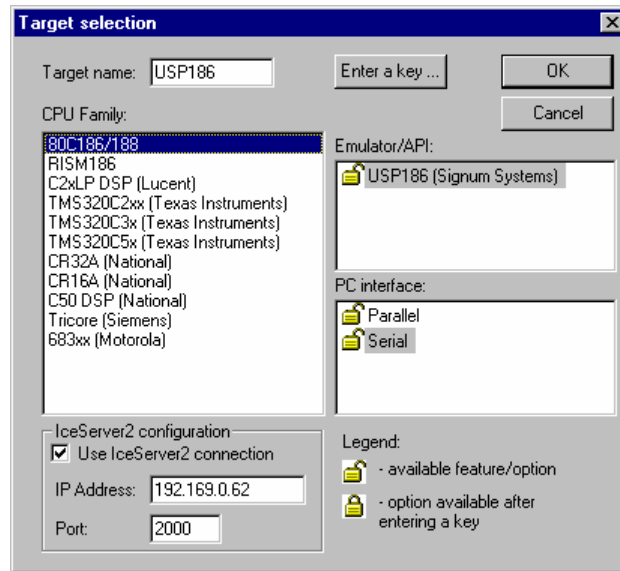
1. Before configuring Chameleon Debugger for communicating via **IceServer2**, make sure that the emulator is connected to the machine on which **IceServer2** has been installed and that **IceServer2** is running.
2. **Enable IceServer2 support in Chameleon.** In the **Target Selection** dialog box, Click the **Enter a key** button.



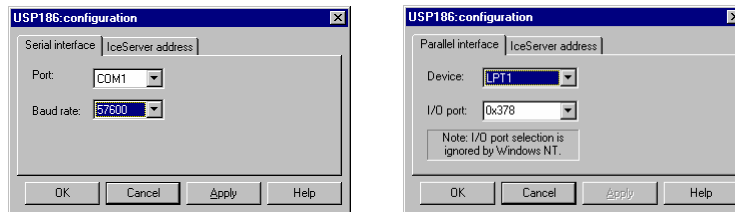
and type the License key from your Product User License Certificate:



- Enter the IP address displayed in the **IceServer2** window into the **IP Address** field of Chameleon's **Target selection** window and check the **Use IceServer2 connection** checkbox:

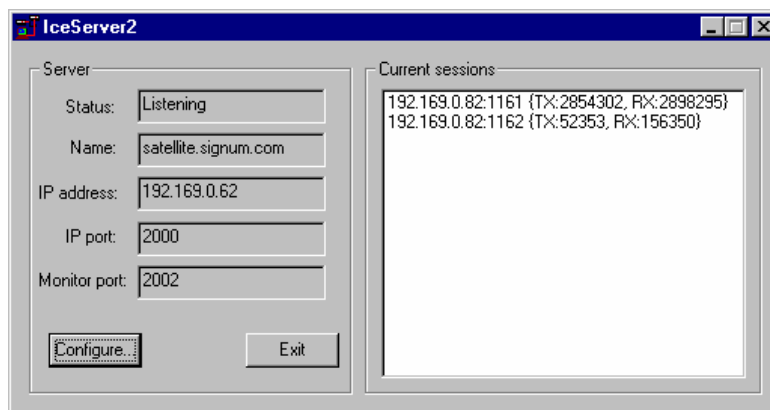


- Click **OK**. You will be asked to enter the communication port parameters:



Note: You should specify the communication ports on the computer on which IceServer2 is running.

- The target should be activated. The **IceServer2** window displays the active connections.



□