

**TMS**

**series**

SIGNUM SYSTEMS CORPORATION

---

JTAGjet Driver for Code Composer Studio 3.3 and 4.x

# Installation Instructions

**SIGNUM**  
S Y S T E M S

## **S I G N U M   S Y S T E M S**

### COPYRIGHT NOTICE

Copyright (c) 2009 by Signum Systems Corporation. All rights are reserved worldwide. No part of this publication may be reproduced, transmitted, transcribed, stored in a retrieval system, or translated into any language or computer language, in any form or by any means, electronic, mechanical, magnetic, optical, chemical, manual, or otherwise, without the prior written permission of Signum Systems.

### DISCLAIMER

Signum Systems makes no representations or warranties with respect to the contents hereof and specifically disclaims any implied warranties of merchantability or fitness for any particular purpose. Also, Signum Systems reserves the right to revise this publication and to make changes from time to time in the content hereof without obligation of Signum Systems to notify any person or organization of such revision or changes.

### WARRANTY

Signum Systems warrants to the original purchaser that this product is free of defects in material and workmanship and performs to applicable published Signum Systems specifications for a period of SIX MONTHS from the date of shipment. If defective, the product must be returned to Signum Systems, prepaid, within the warranty period, and it will be repaired or replaced (at our option) at no charge. Equipment or parts which have been subject to misuse, abuse, alteration, neglect, accident, unauthorized installation or repair are not covered by warranty. This warranty is in lieu of any other warranty expressed or implied. **IN NO EVENT SHALL SIGNUM SYSTEMS BE LIABLE FOR CONSEQUENTIAL DAMAGES OF ANY KIND.** It is up to the purchaser to determine the reliability and suitability of this product for his particular application.



# Table of Contents

## **C H A P T E R 1**

<b>Installing JTAGjet CCStudio Drivers</b>	<b>1</b>
<b>CCStudio Version Support</b>	<b>1</b>
<b>Processor and TMS320 DSP Support</b>	<b>1</b>
<b>JTAGjet USB Device Driver</b>	<b>1</b>
<b>JTAGjet CCStudio Driver</b>	<b>1</b>

## **C H A P T E R 2**

<b>Connecting JTAGjet to Target</b>	<b>3</b>
-------------------------------------	----------

## **C H A P T E R 3**

<b>Configuring CCStudio for JTAGjet</b>	<b>4</b>
<b>Using Built-in Configurations</b>	<b>4</b>
<b>F2803x CLA Support</b>	<b>5</b>
<b>Configuring Drivers Manually</b>	<b>6</b>
<b>Using XDS100/XDS510 Drivers</b>	<b>6</b>

## **C H A P T E R 4**

<b>Advanced JTAGjet Options</b>	<b>7</b>
<b>Custom JTAG Initialization</b>	<b>8</b>
<b>Boot-Mode and Wait-in-Reset Control</b>	<b>10</b>
<b>Faster JTAG Clock during Download</b>	<b>11</b>
<b>Emulator Serial Number</b>	<b>11</b>

## **C H A P T E R 5**

<b>Miscellaneous CCStudio Drivers Topics</b>	<b>12</b>
<b>Running SignumCCS Separately</b>	<b>12</b>
<b>JTAG Clock Considerations</b>	<b>12</b>
<b>Uninstalling JTAGjet Drivers</b>	<b>13</b>

## **A P P E N D I X**

<b>Troubleshooting</b>	<b>14</b>
------------------------	-----------



# Installing JTAGjet CCStudio Drivers

This document describes JTAGjet CCStudio driver installation and configuration process. All setup procedures are for CCStudio 4.x. CCStudio 3.3 has similar driver settings, but you have to run separate CCStudio Setup executable.

Drivers for older CCStudio versions (2.x 3.1 and 3.2) are only available on our WWW page.

## CCStudio Version Support

This Signum JTAGjet driver package for Code Composer Studio supports the CCStudio 3.3 and 4.x. The package should be compatible with future versions of CCStudio 4.x.

Since CCStudio 3.3 and CCStudio 4.x have very different internal structure, JTAGjet driver setup packages for CCStudio 3.3 and 4.x are in two separate packages.

Be aware that CCStudio 4.x may not support some older processors (like C24x for example).

## Processor and TMS320 DSP Support

This release of JTAGjet emulator drivers fully support all devices supported by CCStudio version 3.3 and 4.x.

JTAGjet CCStudio drivers are available in two packages. Full package contains drivers for all DSP, while C2000 package contains only C2000 drivers. C2000 drivers are a sub-set of the complete JTAGjet driver package. The JTAGjet-C2000 emulator support only C2000 processors so you need to install only C2000 drivers. In general, both the C2000 specific and full JTAGjet drivers can safely be installed over their previous versions. Some driver package releases (which have different internal architecture) may ask you to uninstall previous version first.

## JTAGjet USB Device Driver

Your JTAGjet emulator has a USB 2.0 interface. The CCStudio driver package includes the latest system-level JTAGjet USB drivers for Window XP, Windows Vista and Windows7 (both 32-bit and 64-bit versions). The JTAGjet USB driver installs in a standard way by detecting the JTAGjet automatically, when the emulator plugs into to the USB port for the first time.

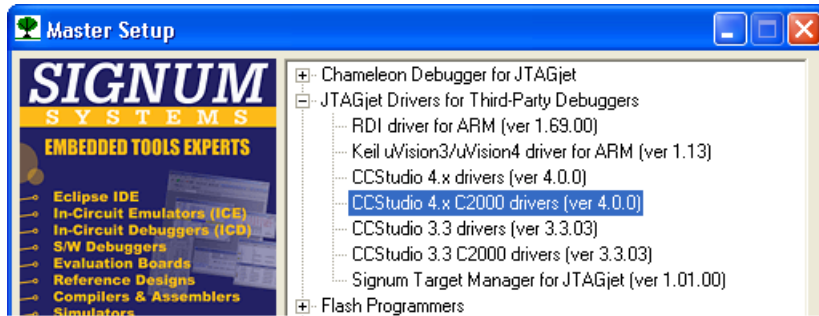
**Note:** To get the best performance from your JTAGjet with the high-speed (480 MHz) USB 2.0 interface, make sure that you use USB 2.0 port. Working with USB 1.1 port may be by an order of magnitude slower.

In case of difficulties, please refer to the *USB 2.0 Driver for JTAGjet and ADM-51 Installation Instructions* document that describes the USB driver installation process in detail. The document is available at [www.signum.com/tecdoc.htm](http://www.signum.com/tecdoc.htm) and on the installation CD.

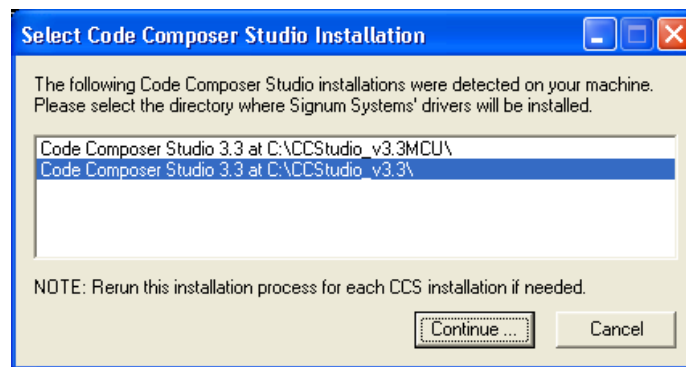
## JTAGjet CCStudio Driver

1. Before installing the new drivers, please close all Code Composer Studio sessions.

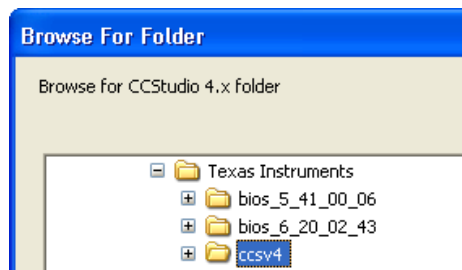
2. Insert the *Signum Systems Development Tools for MS Windows* CD disk into the drive. Expand the *JTAGjet Drivers for Third-Party Debuggers* entry in the installation tree, and double-click appropriate *CCStudio ... drivers* selection. Please note that there are 4 types of CCStudio drivers available – select an appropriate one.



3. CD distributed with JTAGjet-C2000 will have different list of items in *Master Setup*. Only C2000 drivers will be there.
4. If you've downloaded the driver from our WWW page above *Master Setup* screen will not be shown. Just run downloaded *setup\_ccs\*.exe* executable directly.
5. The setup program for CCStudio 3.3 will detect all installed CCStudio 3.3 versions and let you select one:



6. The setup program for CCStudio 4.x will ask you to browse for Code Composer Studio 4.x folder (it is the *C:\Program Files\Texas Instruments\ccsv4* folder by default):



Select the proper Code Composer Studio folder click OK. Setup will check if CCStudio 4.x is installed in this folder.

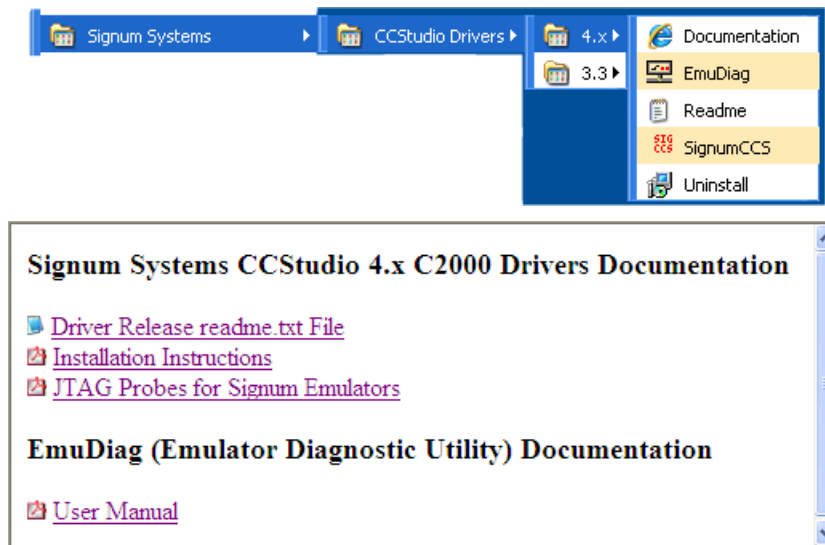
7. When installing drivers for multiple CCStudio versions, it is necessary to repeat the installation process for each individual CCStudio version. Drivers installed for different versions of CCStudio do not share any components. Consequently, you may have different versions of the JTAGjet drivers associated with individual versions of CCStudio.

**Note:** Some CCStudio Service Releases (SR) available as separate download or through the update advisor may require different JTAGjet drivers. In general, older drivers will continue to work with the updated CCStudio version. However, certain features provided by specific SR, such as additional reset capabilities, may not be accessible. You should then re-install JTAGjet drivers after updating CCStudio. Therefore, it is advisable to update CCStudio before installing JTAGjet drivers.

8. Follow the on-screen instructions to complete the installation process. If an older version of the JTAGjet CCStudio drivers exists, you will be prompted to overwrite it. Accept the replacement.

**Note:** If new drivers will not work as expected, you may uninstall the new drivers and install old drivers again.

9. At the end of the installation process, you may be asked to either install or update the system-level JTAGjet USB driver on your computer.
10. Once the drivers are installed, the *SignumCCS* configuration program, the *EmuDiag* utility, and the documentation files are available through the All Programs list in the Windows Start menu:



## Connecting JTAGjet to Target

The standard TI-14 pin JTAG probe usually shipped with your emulator is appropriate for the majority of the TMS320 DSP boards. Some new types of boards, such as the DaVinci DVEVM, require the CTI-20 probe, however.

Detailed descriptions, pinout and images of all JTAGjet probes can be found in the “*JTAGjet Probes for Signum Emulators*” document. A PDF version of this document is available after the drivers have been installed.

Please be aware that some probes are designed for a low-voltage range (1.2-4.5V) only. Do not use such a probe for any of the older, 5V C24x boards.

For motor control DSP boards—many of which utilize the F24x or F28x processor—and wherever high voltage or high current is used, the optically isolated probe ADA-ISO-TI14 is recommended.

When connecting the JTAGjet to the target board, always observe this cautionary rule:

**Caution:** Never connect an un-powered JTAGjet emulator to a powered target board!

When performed in the order indicated, the following startup procedure enforces this requirement.

- Connect the JTAGjet to a USB port on your computer.
- Connect the JTAG probe to an **un-powered** target.
- Power up the target, preferably by turning on the switch on the board.

If you are working with the same board for longer periods, you may safely shut your computer down and then power it up again without disconnecting the JTAG probe from the target. However, always remember to power-down the target before you shut down your computer. When returning to the project, reverse the sequence: start your computer first — this will also power up the JTAGjet via the USB cable. Power up the board just before starting CCStudio.

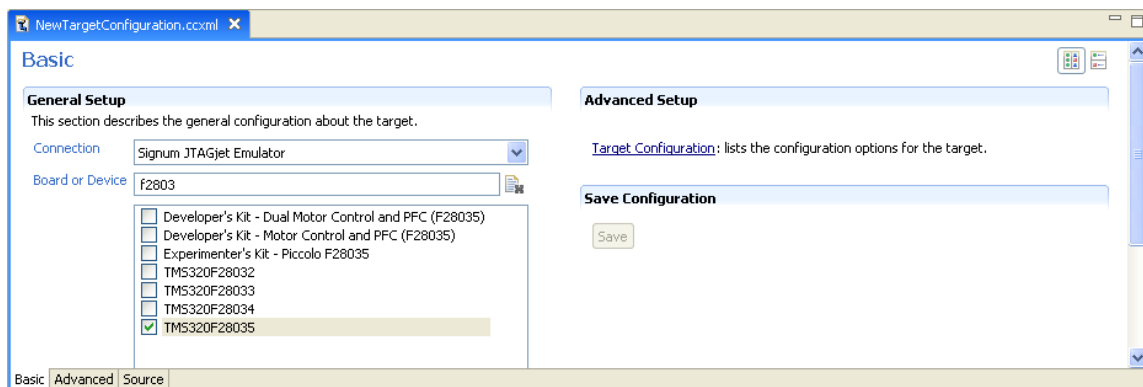
## Configuring CCStudio for JTAGjet

Code Composer Studio must be configured for the Signum JTAGjet emulator through the standard CCStudio setup process.

**Note:** Some, more complex, boards or devices may require more complicated and advanced settings. See documentation shortcut (available after installation) or [www.signum.com](http://www.signum.com) for detailed board or CPU specific instructions. For example, the `signum_davinci.pdf` document describes advanced configuration topics for DM644x and other DaVinci processors.

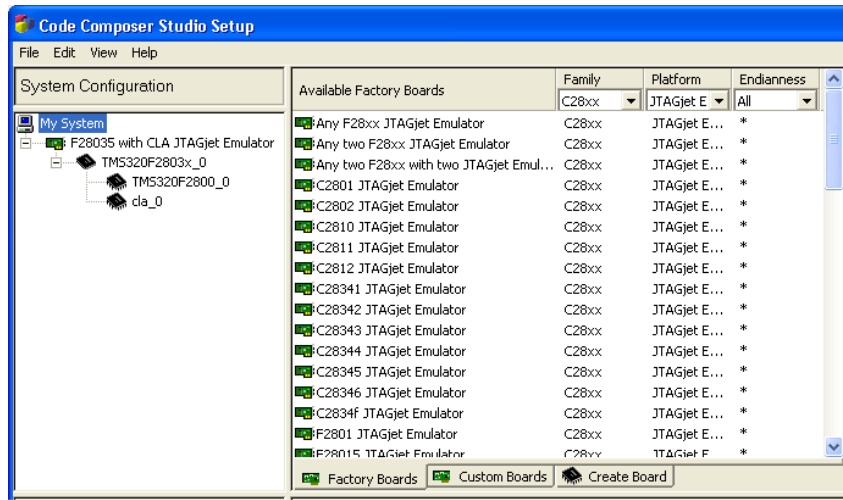
## Using Built-in Configurations

The CCStudio 4.x includes pre-loaded definitions of boards, devices and CPUs for all Texas Instrument’s DSPs and processors. All you have to do is to select Signum JTAGjet Emulators from Connection drop-down list and later select Board or Device (F28035 is shown).

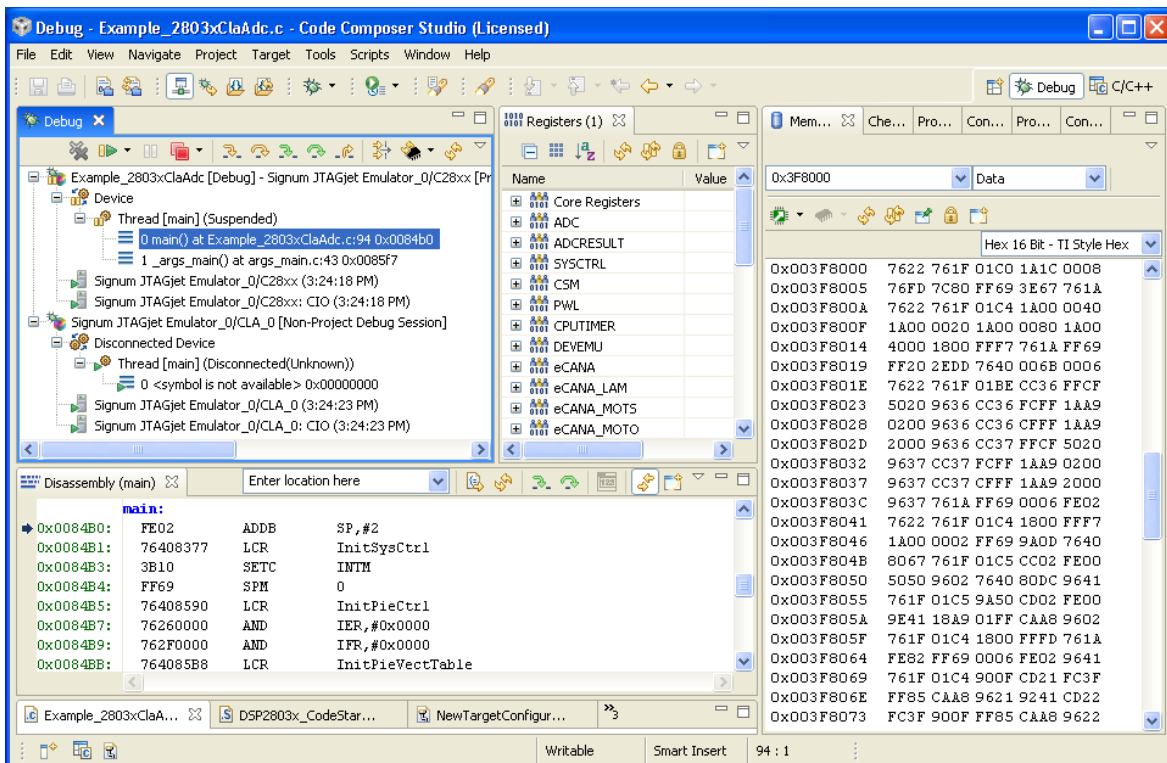


Click **Target Configuration** and you may inspect and/or adjust **Connection Properties** (see Advanced JTAGjet Options for details).

In case of CCStudio 3.3 you have to run CCStudio Setup and select appropriate CCS file:



You may use the **Debug/Connect** menu option (or toolbar button) to connect to the CPU. CCStudio 4.x connected to F8035 is shown below.

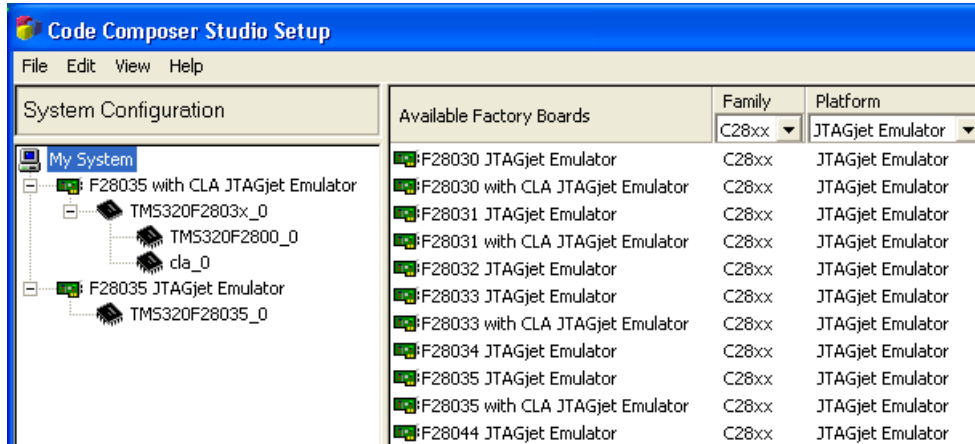


## F2803x CLA Support

JTAGjet drivers support new F2803x CLA in both CCStudio 3.3 and 4.x. You may need to upgrade the CCStudio to have support for CLA. Above the CCStudio 4.x screen is shown with CLA as second processor. The following page describes CLA debugging process (for CCStudio 3.3 and 4.x):

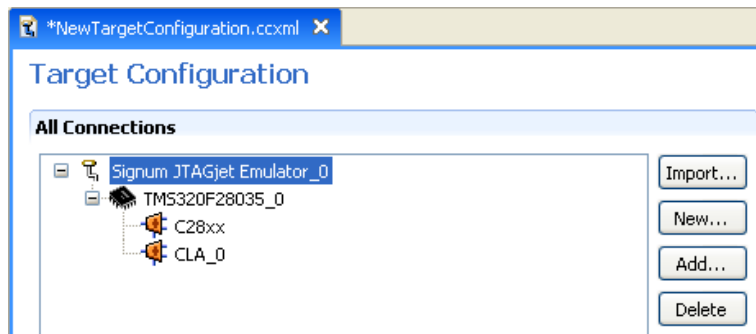
[http://tiexpressdsp.com/index.php/Control\\_Law\\_Accelerator\\_%28C2000\\_CLA%29\\_Debug\\_on\\_CCS\\_v3.3\\_FAQ](http://tiexpressdsp.com/index.php/Control_Law_Accelerator_%28C2000_CLA%29_Debug_on_CCS_v3.3_FAQ)

Some versions of CCStudio 3.3 may not support CLA. Using CCS configuration with CLA will result in an error, when used with CCStudio without support for CLA. We provide F2803x CCS files with and without CLA. Both configurations look as follows:



## Configuring Drivers Manually

If a ready to use board configuration is not available for your board or processor, you will need to create a new board configuration manually. This involves the standard CCStudio setup procedure for creating a new configuration using *Import... New...* and *Add...* button.

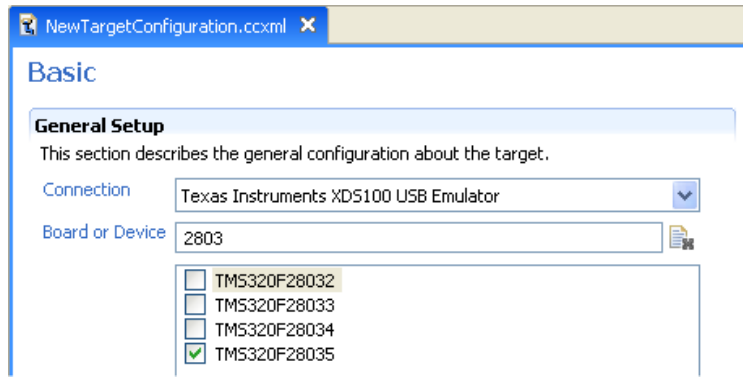


If you already have a configuration for another emulator, you may import it and just change the *Connection* to *Signum JTAGjet Emulator*.

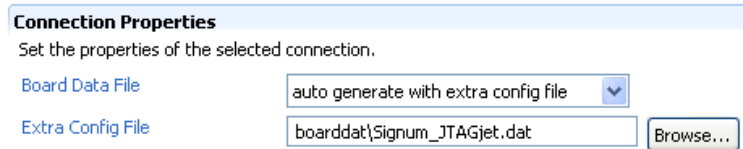
## Using XDS100/XDS510 Drivers

In some instances, the TI DSP/CPU may require a device driver obtained directly from Texas Instruments or downloaded using the CCStudio Update Advisor. In such a case, the JTAGjet CCStudio driver, even if released before the new silicon was available, may support the device., provided the specifications do not deviate significantly from those of the older devices. If you have problems connecting to the CPU using standard driver try using the XDS100 or XDS510 driver on top of the low-level JTAGjet POD driver.

1. Create or import the XDS100 specific configuration. F28035 is used in this example:

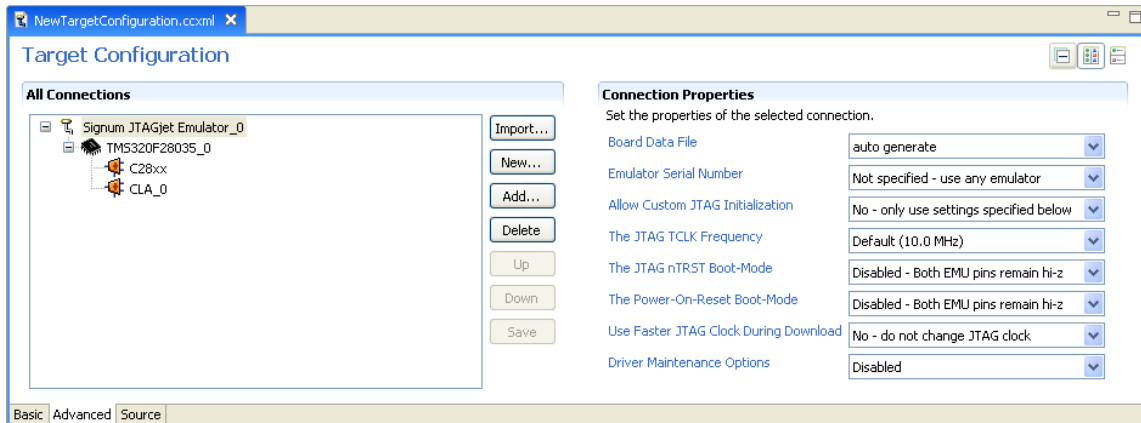


- In the Connection Properties dialog, specify *auto generate with extra config file* as Board Data File. Browse for the *Signum\_JTAGjet.dat* file (located in common\targetdb\boarddat CCStudio 4.x sub-folder) and select it as the *Extra Config File*, as shown:



## Advanced JTAGjet Options

You may open *Target Configuration* and change *Connection Properties*.



Under normal circumstances, it is not necessary to modify these settings – just keep default values as shown above.

**Board Data File** — Can be used to specify file with low-level emulation settings. Some boards may require such an extra settings – see CCStudio or board documentation for more details. This setting does not modify behaviour of JTAGjet driver but rather changes settings in other emulation-related components in CCStudio.

**Emulator Serial Number** — Forces driver to connect to emulator with specified serial number. See below for more details.

**Allow Custom JTAG Initialization** — Allows the specification of a nonstandard JTAG initialization (displayed in separate dialog box). The option is only intended to handle certain non-standard JTAG cases. See below for more details.

**The JTAG TCLK Frequency** — The frequency of the JTAG TCK signal driven by the emulator. Any frequency between 1.0KHz and 30.0MHz or Adaptive/RTCK can be specified. Adaptive/RTCK clock should be used with DaVinci or OMAP devices that incorporate ARM9 or ARM11 cores.

**The JTAG nTRST Boot-Mode** — This defines level of *EMU0/EMU1* pins on raisine edge of *nTRST* pin. *nTRST* is driven high on beginning of debugging session to release JTAG from reset. See below for more details.

**The Power-On-Reset Boot-Mode** — This defines level of *EMU0/EMU1* pins in the moment when target is powered-up (raising edge of *PD* pin on JTAG connector). See below for more details.

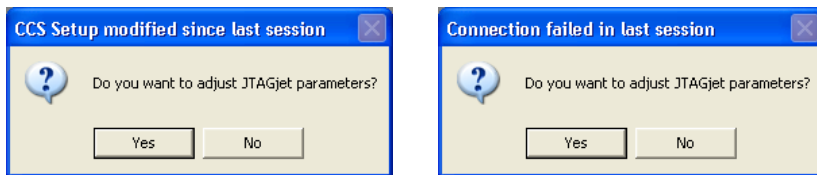
**Use Faster JTAG Clock During Download** — Configures the driver to use a faster JTAG clock during code download. See below for more details.

**Driver Maintenance Options** – Allows the creation of an extra option string to fine-tune the drivers or to generate internal log files. Use this option only at the request of and under supervision of the Signum Technical Support staff.

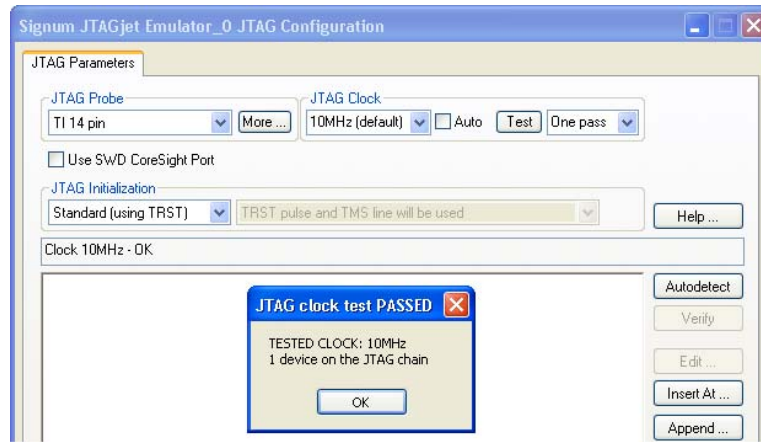
## Custom JTAG Initialization

If the *Allow Custom JTAG Initialization* option is selected, the driver offers an opportunity to customize the advanced JTAGjet parameters and test the JTAG connectivity before the CCSstudio connects to the processor.

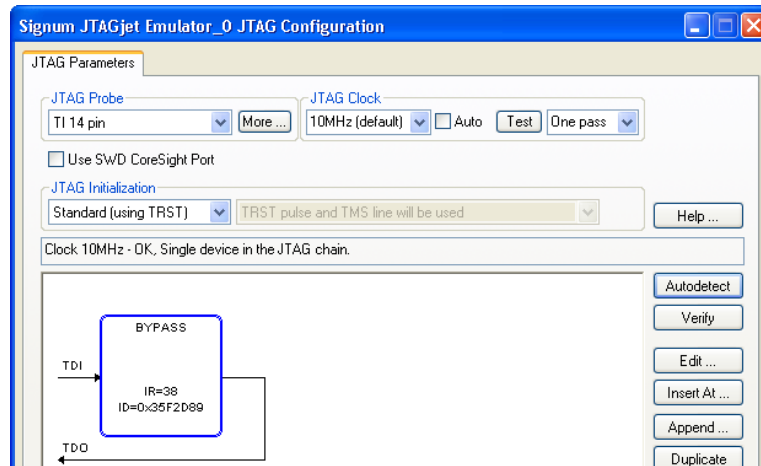
1. Press **Yes** in either of the dialog boxes that may appear:



2. In the JTAG configuration dialog box, select *TI 14-Pin* as the *JTAG Header*. Choose the *JTAG Clock* frequency to be used. The *10MHz(default)* setting is appropriate for most DSP boards. If your processor has an ARM9 or ARM11 core in it (OMAP or DaVinci CPU), use the *Adaptive/RTCK* clock. Press the *Test* button. A typical response from the system for single, regular DSP looks like this:



3. If the 10MHz JTAG clock is not working, click Auto to determine the highest safe frequency. For more details about configuring the JTAGjet, click the Help button and open the EmuDiag User Manual PDF file. The document is also available via the Documentation shortcut in the All Programs list. Click the Autodetect button. The resulting window may look like this.



Note the BYPASS device detected in the JTAG scan chain. This is to be expected, since for the majority of the Texas Instruments DSPs, it is impossible to determine the type of the device physically connected to the JTAG. CCStudio will use the driver of the type you selected in the CCStudio Setup program, so exact CPU identification is not so important.

The number of devices and the total number of IR bits should be detected correctly and correspond to the devices set in CCStudio Setup. In our example, the value IR=38 is the IR length of a single F2808 DSP. Typical IR values for the TMS320 DSP devices are these: 8 for the C24x, C54x, C6x0x processors; 46 for C6x1x, C6x2x; and 38 for C28x, C55x, C64x and C64x+. Click Help for more information about IR lengths associated with other processors.

4. If you have more complex CPU (for example DM644x with ARM926EJ-S core), you need to select Adaptive/RTICK as JTAG clock.

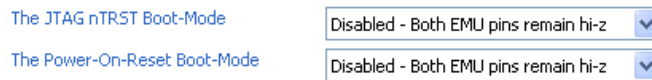
All the JTAGjet-related configuration options appear only during the first connection after any change made in the CCStudio setup. Subsequent CCStudio sessions for the same board will start automatically. To customize these parameters, use the SignumCCS utility at any time. The new settings will take effect in the next CCStudio session.

## Boot-Mode and Wait-in-Reset Control

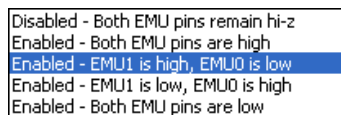
Some devices (F2800 DSP family for example) use *EMU0* and *EMU1* pins to define CPU boot mode.

One of these modes (important from debugging point of view) is *Wait-in-reset* mode. CPU is hold in reset until debugger connects to it. *Wait-in-reset* mode allows connecting to the CPU programmed with incorrect code (for example sets too fast PLL), incorrectly programs some other vital signals or simply runs from an un-initialized memory.

The following *Connection Properties* settings define level of *EMU0/EMU1* pins:



Allowed choices are:

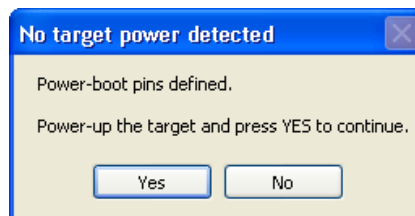


The highlighted choice (**Enabled = EMU1 is high, EMU0 is low**) is *Wait-in-reset* mode for most CPUs. To determine boot modes (if any) supported by your device and the proper level for each boot mode see your device's data sheet.

The **The JTAG nTRST Boot-Mode** selection defines level of *EMU0/EMU1* pins on raising edge of *nTRST* pin. *nTRST* is driven high on beginning of debugging session to release JTAG from reset.

The **The Power-On-Reset Boot-Mode** defines level of *EMU0/EMU1* pins in the moment when target is powered-up (raising edge of *PD* pin on JTAG connector).

Please be aware that after this option is defined in CCStudio dialog, it is not being passed to an emulator yet. You need to attempt to connect to the CPU first. With JTAGjet drivers CCStudio may be started without CPU power, so power-down the board first and then attempt to connect to it in CCStudio (still without CPU power). JTAGjet driver will detect and report lack of target power with the following message:



With this message is on the screen, connection to emulator has been already made and *EMU0/EMU1* pins have been already properly configured. If you power-up the board now, CPU will sense appropriate levels of *EMU0/EMU1* pins. After powering up the board click the *Yes* button and CCStudio will connect to the CPU (which is being held in reset).

Some CPUs (for example Piccolo F2802x/F2803x) may not have *EMU0/EMU1* pins. Only the level of *nTRST* pin during power-up determines emulator presence. If the *nTRST* is low (logical 0) it is assumed that emulator is not connected and CPU will boot normally. If *nTRST* pin is high (logical 1) boot ROM will know that emulator is present and it will enter *Wait-boot* option (execute infinite loop). It is not exactly the same as *Wait-in-reset* (which is truly holding CPU in reset) but it also prevents CPU

from executing unwanted code. Here is a snapshot from F28027 disassembly showing infinite loop executing in the ROM:

```

Disassembly ($C:/Texas Instruments/Piccolo controlSTICK/~SupportF
-----
0x3FF5EE: 0006    LRETR
0x3FF5EF: 767FF7A5 LCR      0x3FF7A5
0x3FF5F1: 7625    ESTOP0
0x3FF5F2: 6FFF    SB      -1,UNC
0x3FF5F3: 7622    EALLOW
  
```

When CCStudio debug session will close, *EMU0/EMU1* pins will remain set to defined values. As result, power-cycle of the board will not allow CPU to boot and run normally. You must disable **The Power-On-Reset Boot-Mode** to be able to run the board without disconnecting an emulator. If you power-cycle an emulator (by disconnecting the USB cable) these settings will be disabled as well.

**Note:** *EMU0/EMU1* pins are open-collector bi-directional lines between emulator and CPU. It means that *EMU0/EMU1 is high* setting should be understood as tri-stating appropriate EMU0/EMU1 pins by emulator. Since EMU0/EMU1 lines should have pull-up resistor on the board, it is the same as setting these pins to logical 1 level. *EMU0/1 is low* setting will provide strong drive to logical 0 level.

## Faster JTAG Clock during Download

**Caution:** This feature relies on the assumption that the CPU clock is fast enough when downloading the code. Use this option ONLY when (1) the code to download is large, (2) the connection to the CPU is stable, and (3) you repeat the download operation often. Do not use it when connecting to the target for the first time, or when your memory or CPU clock configuration settings (in GEL or in code) are not finalized. None of the predefined configurations supplied with the driver has this option set.

For target boards with OMAP, DaVinci or C6000 processors, the code downloaded can be quite large, reaching several Megabytes.

In general, the faster JTAG clock, the faster code download. However, your target may be running with a slow clock, or even while in the sleep mode. In such cases, it may be impossible to connect to the CPU using fast JTAG clock. The GEL files provided with most boards initialize the CPU before downloading the code. The process includes the setup of the PLL (to make the CPU run faster) and the initialization of SDRAM (to accelerate access to RAM). After the PLL is set up and CPU runs using a fast clock, it may be possible to use a faster JTAG clock.

If the Use Faster JTAG Clock During Download option is set to 10, 15, 20 or 30MHz, the driver internally switches to the specified faster JTAG clock before performing large memory transfers, such as code downloads or massive memory uploads. At the end of the transfer, the option switches back to the original clock (usually Adaptive/RTCK). This approach ensures that the CPU initialization and all accesses to the registers use the original (slower or Adaptive/RTCK) JTAG clock frequency.

Typically, this option results in doubling the download speed.

## Emulator Serial Number

The Connection Properties option allows you to specify the serial number of the emulator to use. The default settings do not include the emulator serial number.

Connection Properties	
Set the properties of the selected connection.	
Board Data File	auto generate
Emulator Serial Number	Not specified - use any emulator

The above (default) settings are usually satisfactory for a single emulator connected to one PC. These settings are also appropriate when a development group shares several emulators, one (and only one) of which is connected to your machine in particular time. If you use different emulators, you do not have to change anything.

However, it is possible to supply the serial number of a specific emulator:

Connection Properties	
Set the properties of the selected connection.	
Board Data File	auto generate
Emulator Serial Number	Connect to specified emulator only
Serial Number of JTAGjet emulator	12345

This is useful (and necessary) when there are multiple emulators attached to your PC. The option allows you to tell which emulator is used in a CCStudio debug session, or connect to multiple target boards with multiple emulators simultaneously.

## Miscellaneous CCStudio Drivers Topics

### Running SignumCCS Separately

The SignumCCS utility can be used to configure custom JTAG initialization option for use during CCStudio session. You need to enable the *Use Custom JTAG Initialization* option and then run SignumCCS.

After connecting to the emulator, SignumCCS displays the same JTAGjet configuration as the one used when starting the CCStudio session. All the modifications will be saved and used in the next CCStudio debug session.

### JTAG Clock Considerations

The JTAGjet configuration module used in the CCStudio drivers is also used by EmuDiag, the Signum Emulator Diagnostics Utility. For added convenience, EmuDiag is installed together with the JTAGjet CCStudio drivers.

The following chapters in the EmuDiag User Manual provide a comprehensive description of the JTAGjet settings and related issues:

- Configuring and Testing JTAG
- Advanced JTAG Topics
- Basic JTAG Debugging Guidelines

The general guidelines for setting the JTAG clock for your board are as follows:

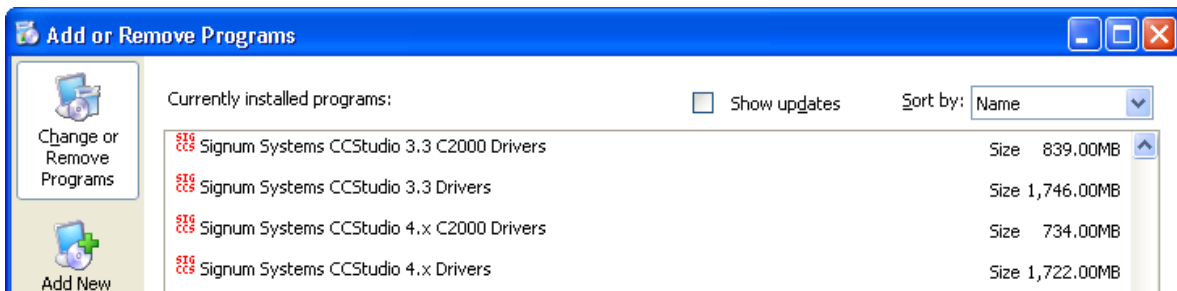
- Select the fastest JTAG clock supported by your board or set it to 10 MHz, whichever is lower. The rule of thumb is that the JTAG clock must not be faster than 1/3 of the CPU clock. The board may not support selections higher than 10 MHz. Higher clock frequencies may be used successfully only when Code Composer Studio is running without any problems at lower settings. Remember that SignumCCS can change the JTAG clock speed while CCStudio is running.
- The Adaptive/RTCK option should be used for the OMAP and DaVinci devices that include ARM9 or ARM11 cores. These cores synchronize the JTAG clock with the CPU clock and return the RTCK clock signal back to the emulator. The Adaptive/RTCK option makes the JTAG channel functional at a broad range of CPU speeds that may be varied at will by the running application.

**Caution:** The Adaptive/RTCK option will work for plain DSP devices, since the TCK and TCKRET signals on the JTAG connector are connected together. However, the option may be slower than using a fixed 10MHz clock.

It is recommended to test the selected JTAG clock speed setting by clicking the Test button. The program will communicate with the target board at the new clock frequency and report errors, if any. The passing this test does not indicate that the entire board will work at the tested speed, because some memories may not be fast enough above the 10 MHz default setting.

## Uninstalling JTAGjet Drivers

A list of currently installed CCStudio JTAGjet drivers is available through the Control Panel Add or Remove Programs features:



You may remove the JTAGjet Driver from these lists. Alternately, click the driver's Uninstall shortcut in the All Programs menu.

The JTAGjet drivers' sizes reported in Control Panel are the sizes of the entire CCStudio installations, into which they are incorporated. In reality, Signum JTAGjet drivers occupy merely 2.5 MB.

The un-installation process removes all JTAGjet driver components from a particular CCStudio version.

Some temporary files, configuration files and log files created while the drivers were installed may remain un-erased. All the installed components, including the drivers, libraries, SignumCCS.exe and configuration files, have file names starting with the word Signum for ease of identification. The bulk of the internal components are installed in `.\\emulation\\Signum` CCStudio 4.x subfolder. Both the subfolder and the component files can be removed.

## Troubleshooting

1. The EmuDiag documentation provides list of comprehensive JTAG-related tips and describes the JTAG configuration process in details. It is available via the Documentation shortcut
2. Use the SignumCCS or EmuDiag program to customize and test the JTAG connection. The Help button provides additional information about JTAG-related issues.
3. JTAGjet will not work with limited CCStudio versions. CCStudio will report error about an unsupported driver. See section *Limited CCStudio Versions* for details.
4. For DaVinci related problems, consult DaVinci-specific PDF file available through the Documentation shortcut.
5. Make sure that the JTAG clock is stable and its speed does not exceed the recommended value. JTAG clock should not be faster than 1/3 of the current CPU frequency. As some CPUs start up at a very low CPU clock speed, verify the lowest CPU clock rate and set the JTAG clock to 1/3 of that rate.
6. For OMAP and DaVinci devices, which include ARM9/ARM11 cores, use the Adaptive/RTCK clock.
7. Use the fixed clock with TMS320 DSP and TMS470 devices with ARM7 cores.
8. To test your scan chain, use AutoDetect in the SignumCCS program. Compare the results with the device list in the CCStudio Setup. The chain may be incorrect due to modifications, mistakes or different switch and jumper settings on the board.
9. If the devices (or IR sizes) on the JTAG are different than expected, verify the EMU0/EMU1 pin values on your board. Many processors reconfigure the JTAG scan chain depending on the values of these pins, sampled when the CPU is powered up.
10. If you are debugging both ARM and DSP at the same time, as is the case with the OMAP or DaVinci devices, please make sure that the ARM releases the DSP from reset (usually by running GEL file on the ARM side) before trying to connect to the DSP.
11. Make sure that the CPU memory and PLL are properly configured. Do that by selecting the correct board and CCStudio GEL script file during the CCStudio setup process. As an alternative, run an initialization GEL script manually from within CCStudio.

